

Lifetime guarantee

Impey Showers Limited guarantees its range of branded showering products against faulty materials or manufacture for a Lifetime, provided that they have been installed and maintained in accordance with the manufacturer's instructions.

The guarantee extends to non-electrical products in general use and excludes normal wear and tear. For products such as taps, shower valves, bathroom accessories, waterproofing and electrical products, the standard manufacturer's guarantee will apply. Where products included in the Lifetime guarantee are used for commercial use, such as hospitals, nursing homes or hotels, a 5 year guarantee will be applicable.

Parts that are defined as wearing parts, such as seals, seat pads etc, are subject to a 5 year guarantee. If in our opinion the product has been modified, neglected, misused or is the subject of accidental damage the guarantee will not be applicable.

Impey Showers Limited has a policy of continuous improvement and therefore reserves the right to revise or amend the specification of any product without notice. In situations where a product has failed, subject to the terms of the guarantee, and a direct replacement is no longer available, Impey Showers Ltd will replace it with the nearest equivalent product.

The liability of Impey Showers Limited does not extend to consequential loss or damage arising from the defective product and is limited to the price of the original goods supplied by Impey Showers Limited. The guarantee is in addition to your statutory rights.

Full terms and conditions available on our website  
www.impeyshowers.com



Impey Showers Limited, Conquest Business Park,  
Ilton, Somerset TA19 9EA  
General /Technical no. 01460 256080  
Sales no. 01460 256090 • Fax no. 01460 259800  
Email: info@impeyshowers.com

www.impeyshowers.com



facebook.com/impeyshowers

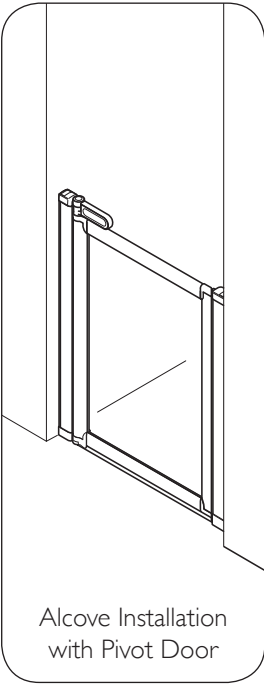
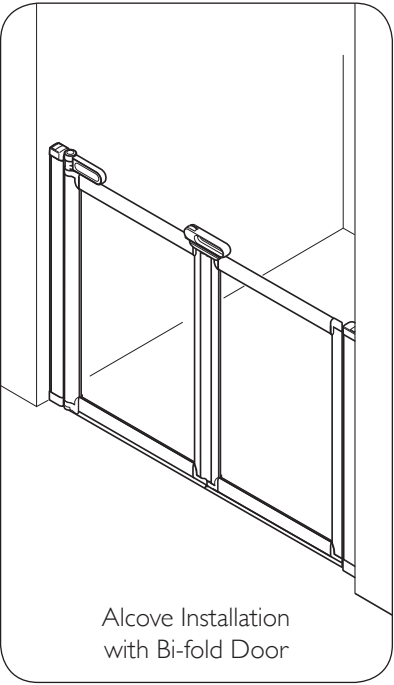
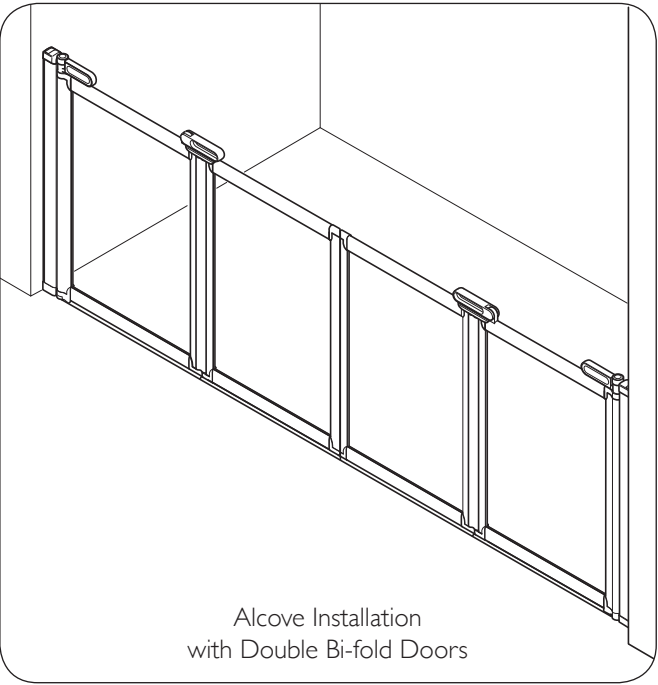
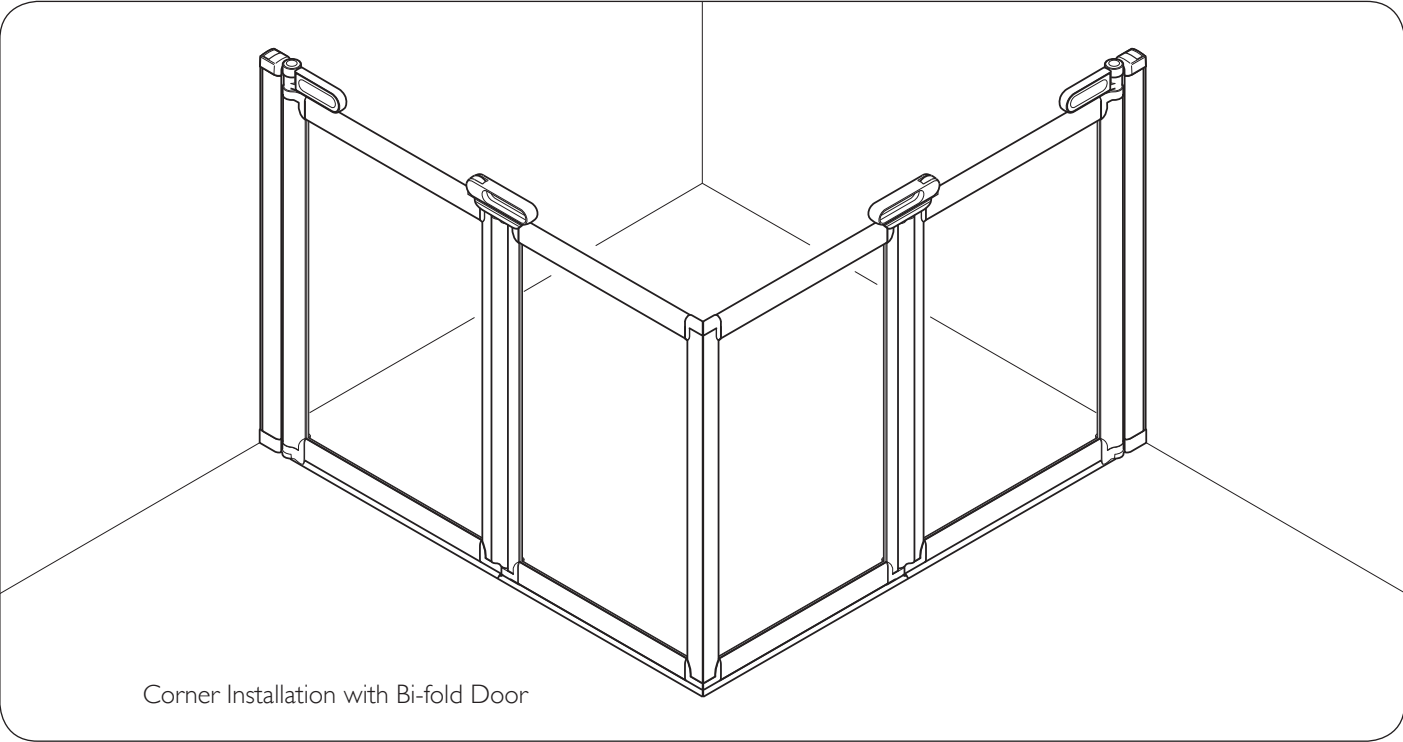


@impeyshowers



Elevate Half Height Door  
Installation Guide

The installation of the Curtain rail is covered in a separate installation guide.  
This instruction is a general guide for installing the Elevate enclosures.

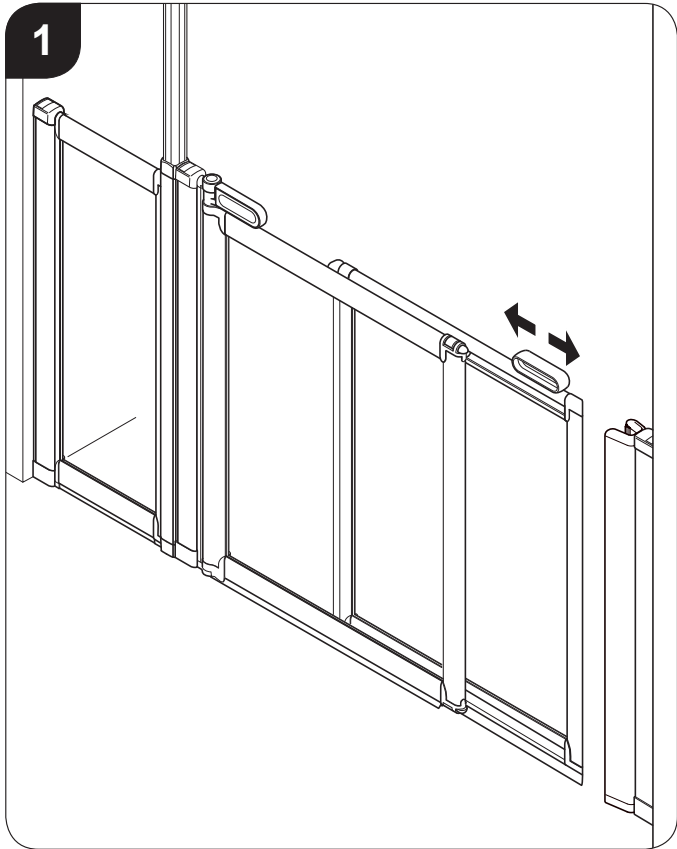


Contents

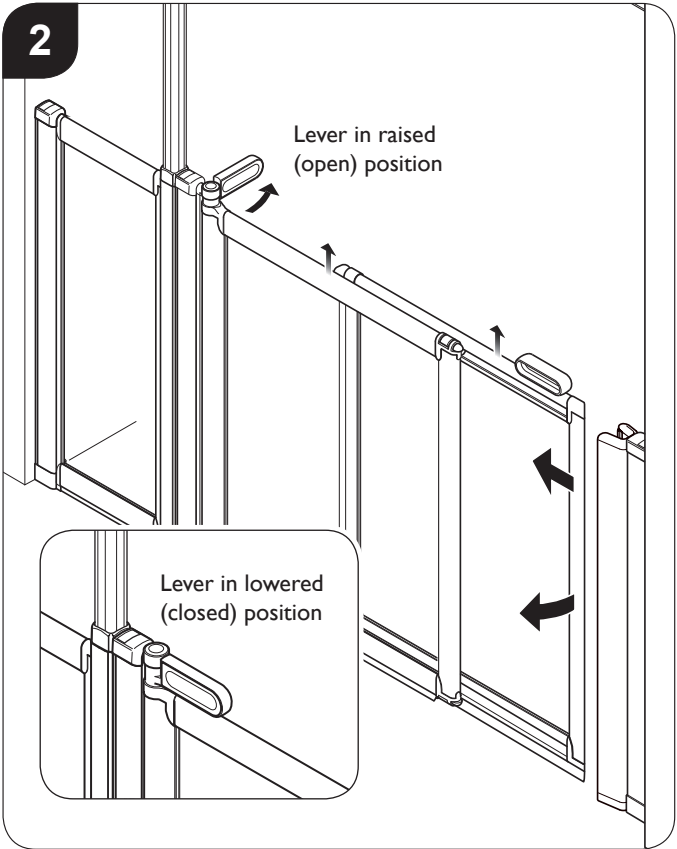
	Page
Safety	2
Door System Explained	3
<b>Section A - Fixed Panel and Floor to Ceiling Pole</b>	
Component Content List	4
Fixed Panel and Floor to Ceiling Pole	5 - 7
<b>Installing Doors</b>	
Component Content List	8
<b>Section B - Installing Door to Fixed Panel</b>	
Installing Door to Fixed Panel	9
<b>Section C - Corner Enclosure</b>	
Fitting Wall Channels - Corner Enclosure	10
Fitting Doors - Corner Enclosure	10 - 11
<b>Section D - Alcove Enclosure</b>	
Fitting Wall Channels - Alcove Enclosure	12
Fitting Doors - Alcove Enclosure	13 - 14
<b>Section E - Double Door Alcove Enclosure</b>	
Fitting Wall Channels - Alcove Enclosure	15
Fitting Doors - Alcove Enclosure	15 -16
<b>Section F - Finishing &amp; Operating</b>	
Sealing	17
Operating Bi-Fold Doors	18
Operating Sliding Doors	19

Safety

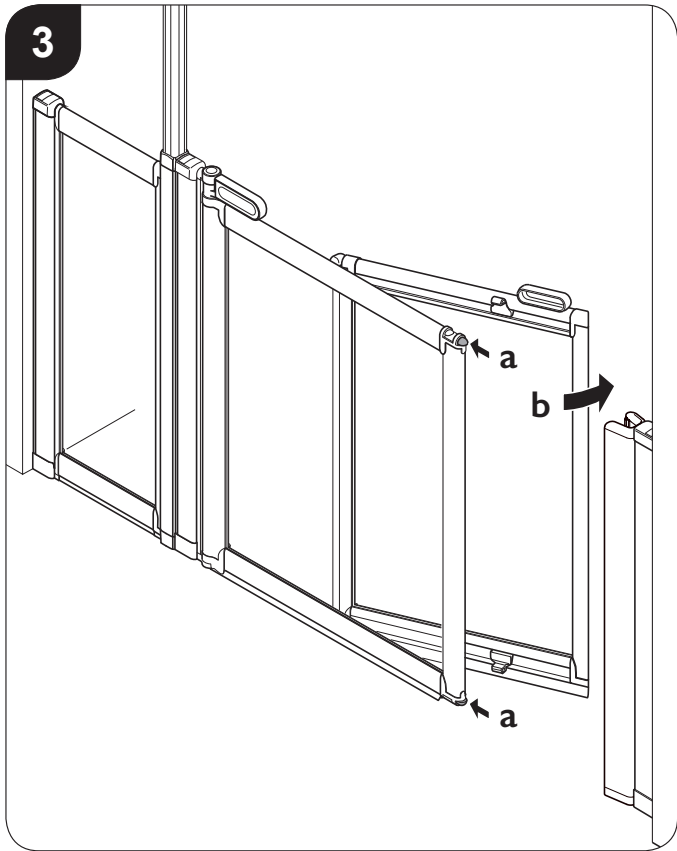
- **Please read these installation instructions carefully before proceeding.**
- This instruction is a general guide for installing the Elevate enclosures.
- Keep guide for future reference.
- If you are unsure about any part of the installation, please contact our Technical Department on: 01460 256080.
- Incorrect installation will invalidate the guarantee.
- Make sure there are no hidden pipes or cables in the floor or walls where you intend to drill.
- Fitting the Enclosure may need to be carried out by two people.
- Wear safety goggles, appropriate clothing and footwear.
- Handle with care.



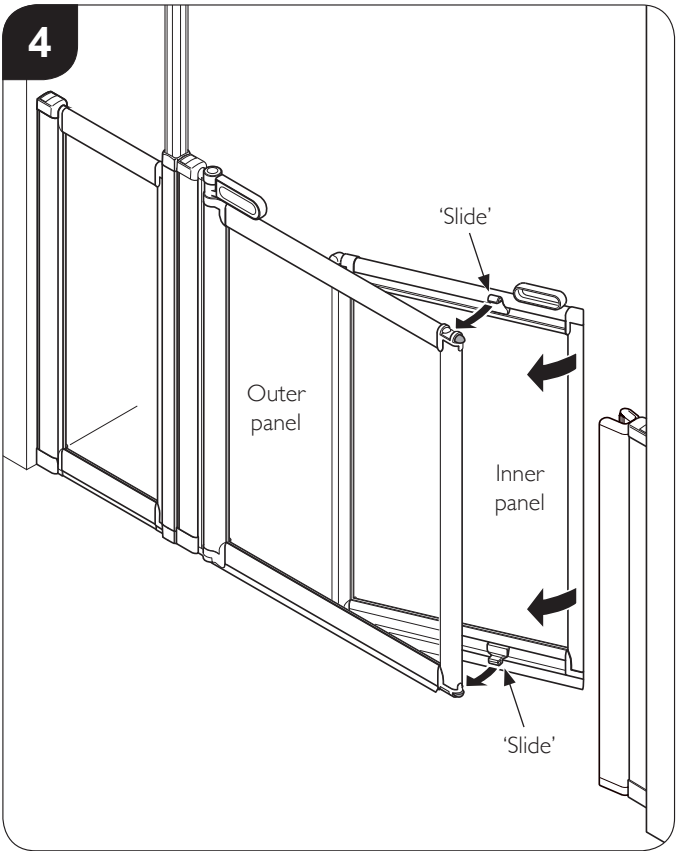
To operate the 'Sliding': Simply slide it open and slide it closed.



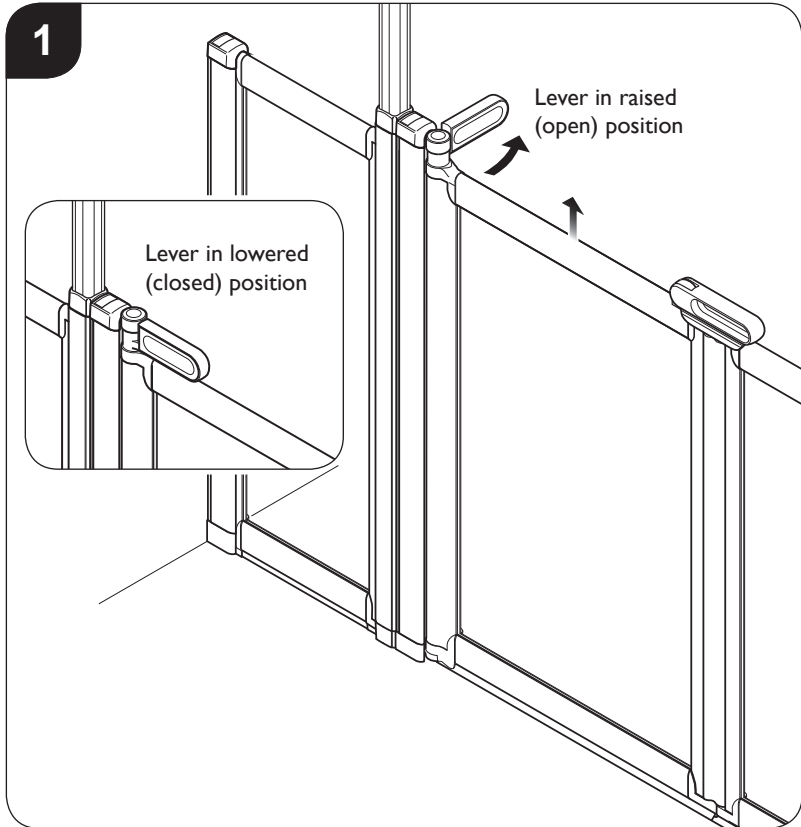
To open: Rotate the 'Door lever' inwards or outwards to lift the door; slide out of closing profile and pivot the door open.



To separate doors for cleaning: Slide the door open, press both buttons (a) and 'pivot' the 2 door panels apart (b).

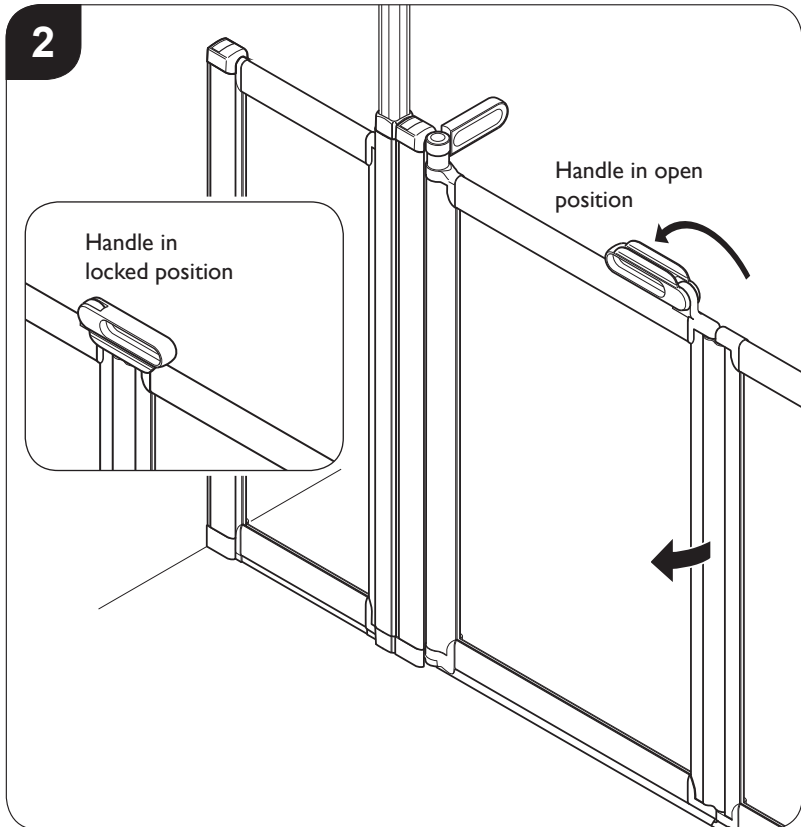
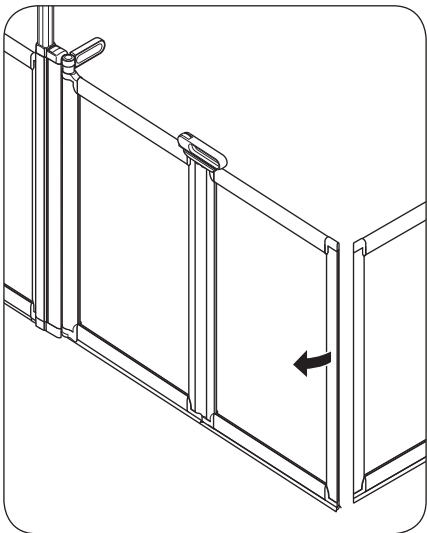


To reconnect the doors: 'Pivot' the inner panel back onto the outer panel. Carefully line up the top and bottom 'slides' on the inner panel with locking mouldings on the outer panel and 'click' together.



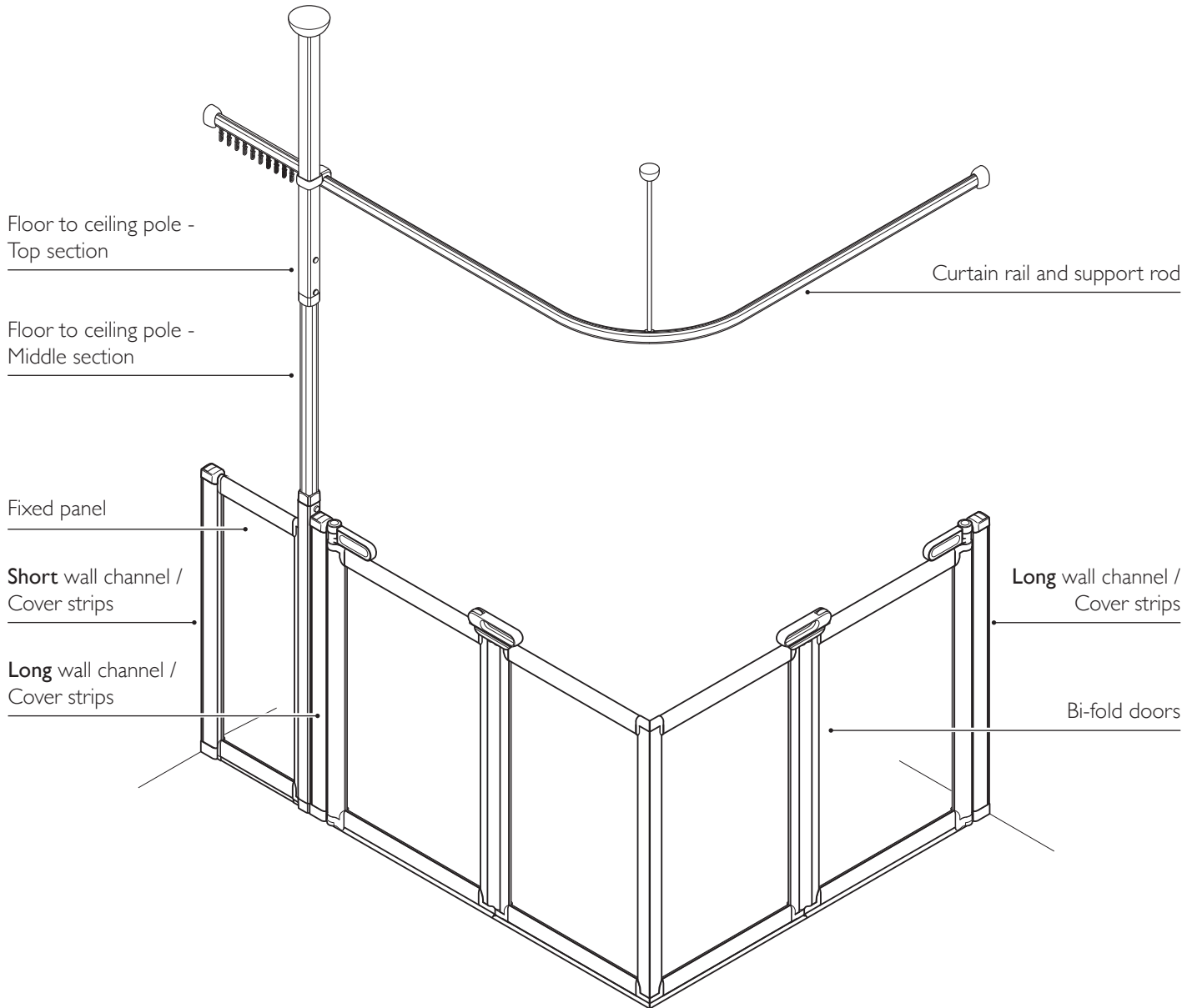
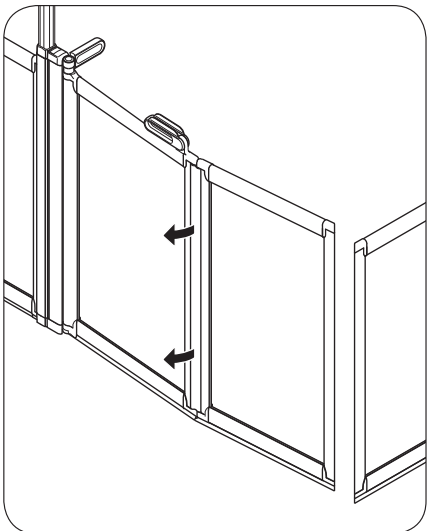
**To open:** Rotate the 'Door lever' inwards or outwards to lift the door. The door can then swing in or out as required.

**To close:** Carry out the above procedure in the reverse order.



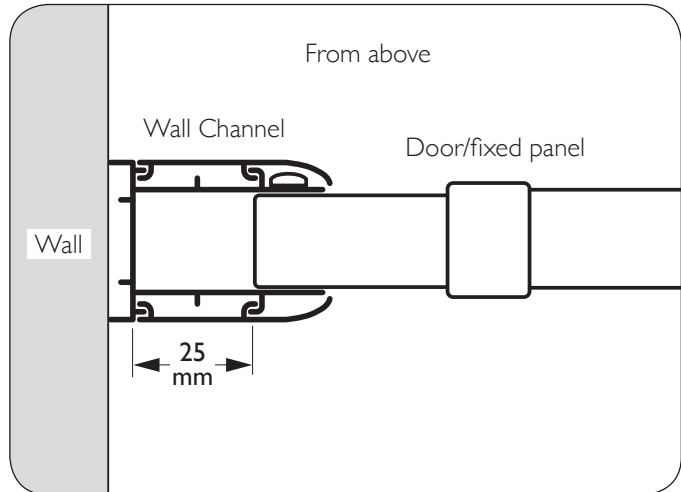
**To operate the 'Bi-fold':** Rotate the 'Door lever' inwards to lift the door, flip the 'Bi-fold handle' over and the door will 'pivot' in or out as required.

**To close:** Carry out the above procedure in the reverse order.



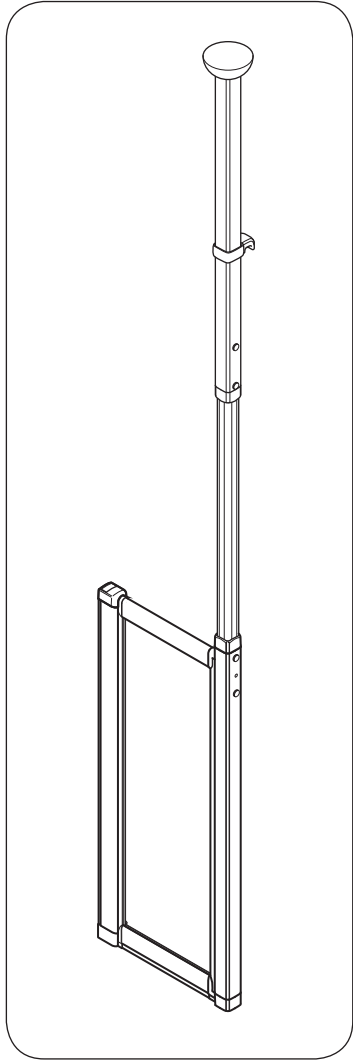
A Corner Enclosure is shown as an example.

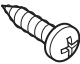
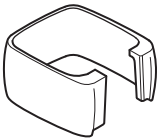

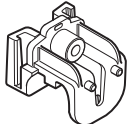
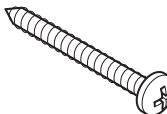

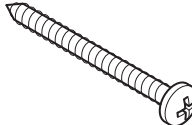
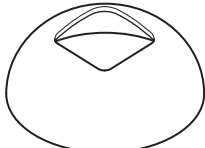
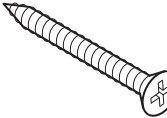
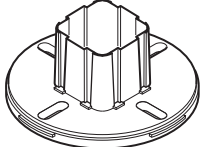
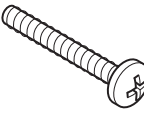
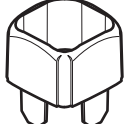

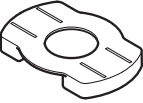

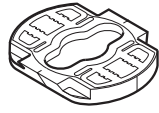

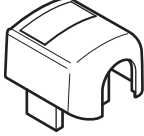
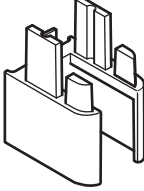
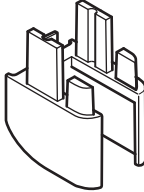
Wall Channel Adjustment Range



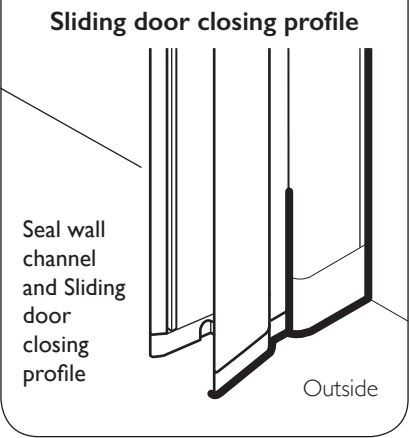
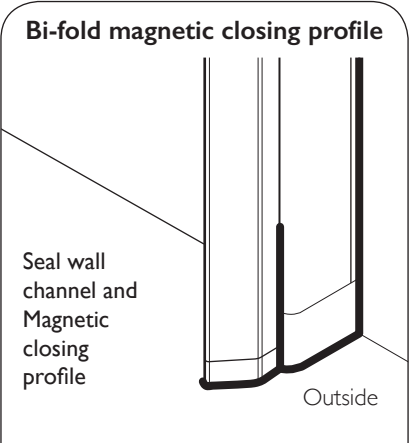
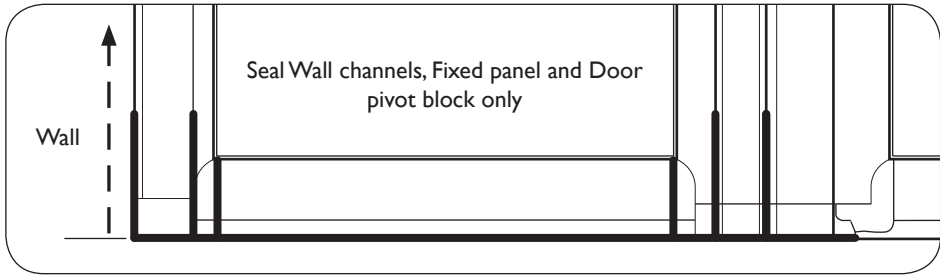
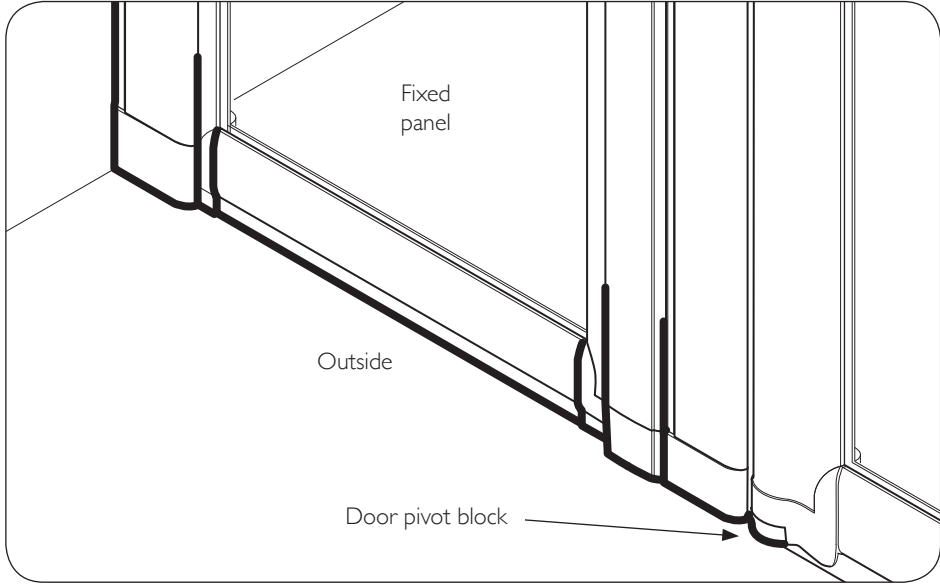
There is a maximum of 25mm of adjustment for the door/fix panel within each wall channel.

Section A - Fixed Panel and Floor to Ceiling Pole  
Component Content List



	3222 x 3		50440 x 1
	3230 x 4		80709 x 1
	8203 x 2		50442 x 1
	50539 x 2		50401 x 1
	9200 x 5		50400 x 1
	60066 x 1		50399 x 2
	8212 x 2		60537 x 1
	4745 x 1		60538 x 1
	4748 x 4		
	80710 x 1		
	50422 x 1		
	50423 x 1		

Fixed Panels & Magnetic Closing Profile Only  
Sealing

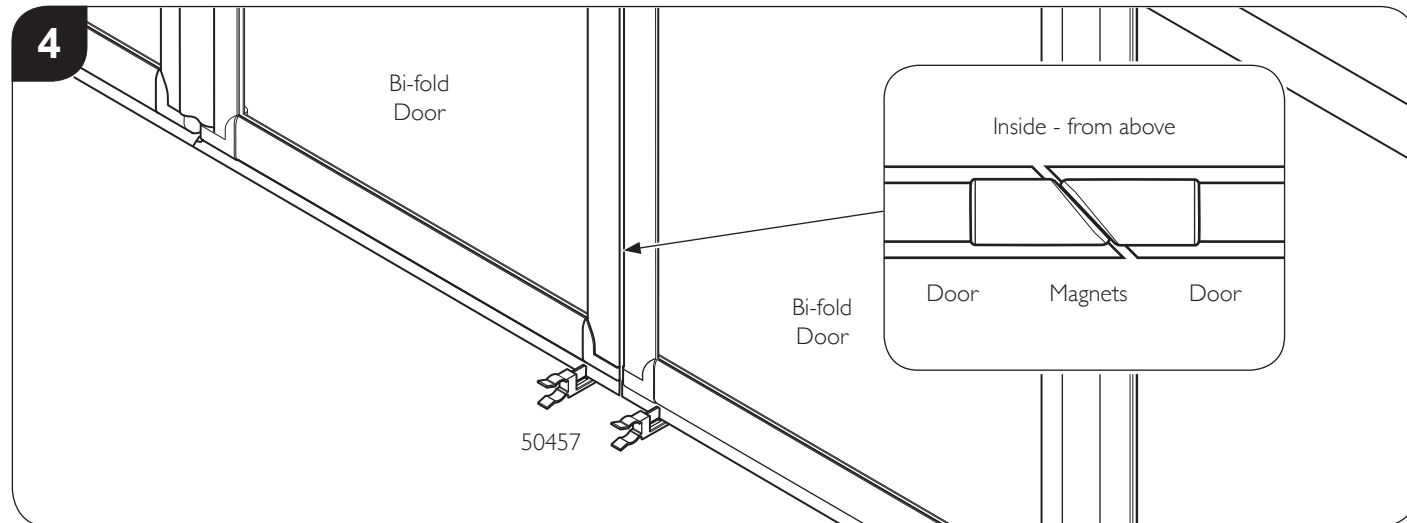


From the outside only, apply silicone sealant to the bottom of the Fixed panel, wall channels, door pivot block and the magnetic closing profile. Also seal 50mm up the vertical joints and all of the way up the wall/wall channels (to the underside of the top caps) as shown.

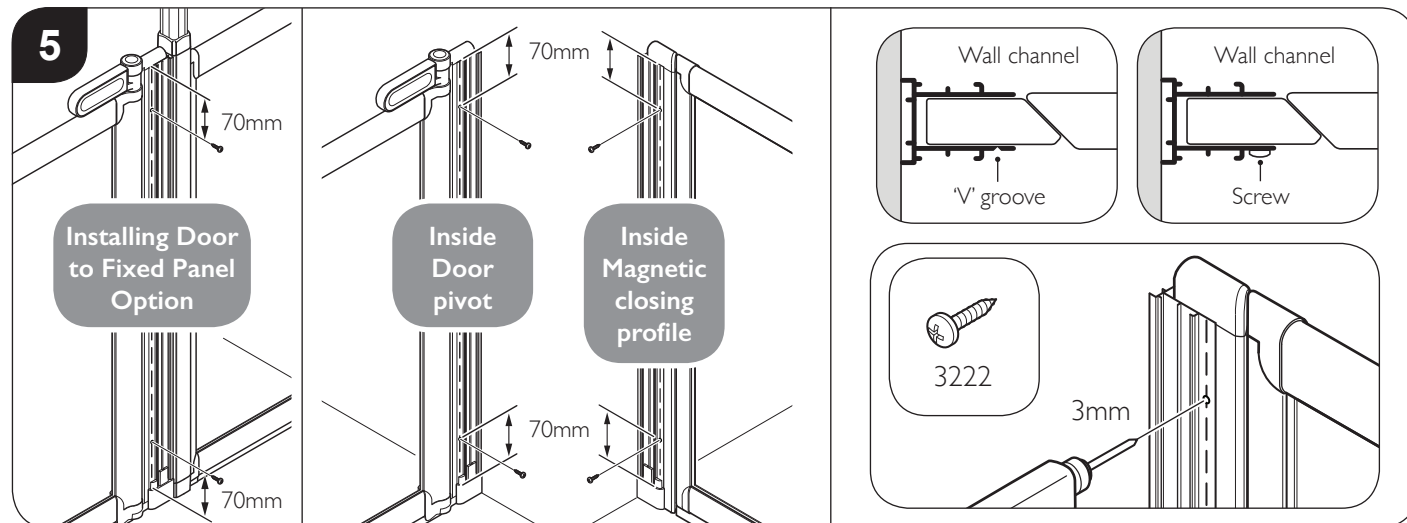
**Important:** You must not use the enclosure for 24 hours after installation.  
**Do not** use bleach, scouring powders, solvents or aggressive cleaning agents. To clean, use warm soapy water, a clean cloth and rinse off.



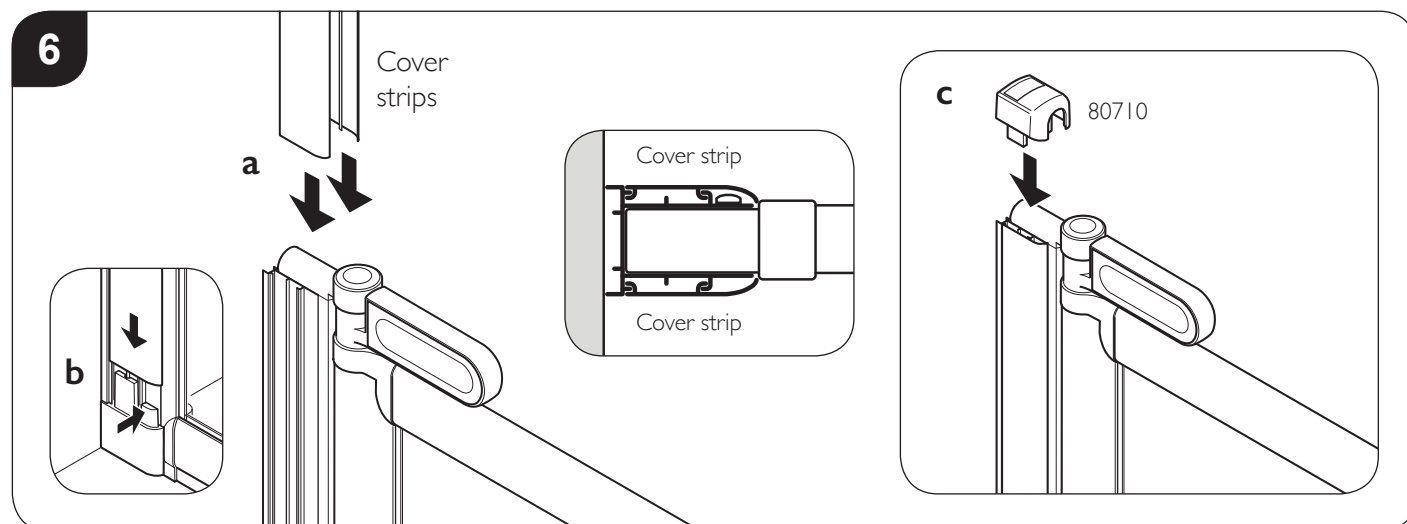
## Section E Double Door Alcove Enclosure - Fitting Doors



**To level the doors:** Using the setting tools (50457), set the height of the doors ensuring the magnets line up down the full length of the doors. Insert a setting tool under the seal at the end of each door. Allow the doors to rest on the door setting tools as shown above, this ensures the doors are correctly height adjusted. Ensure the doors are centralised in-between the wall channels.

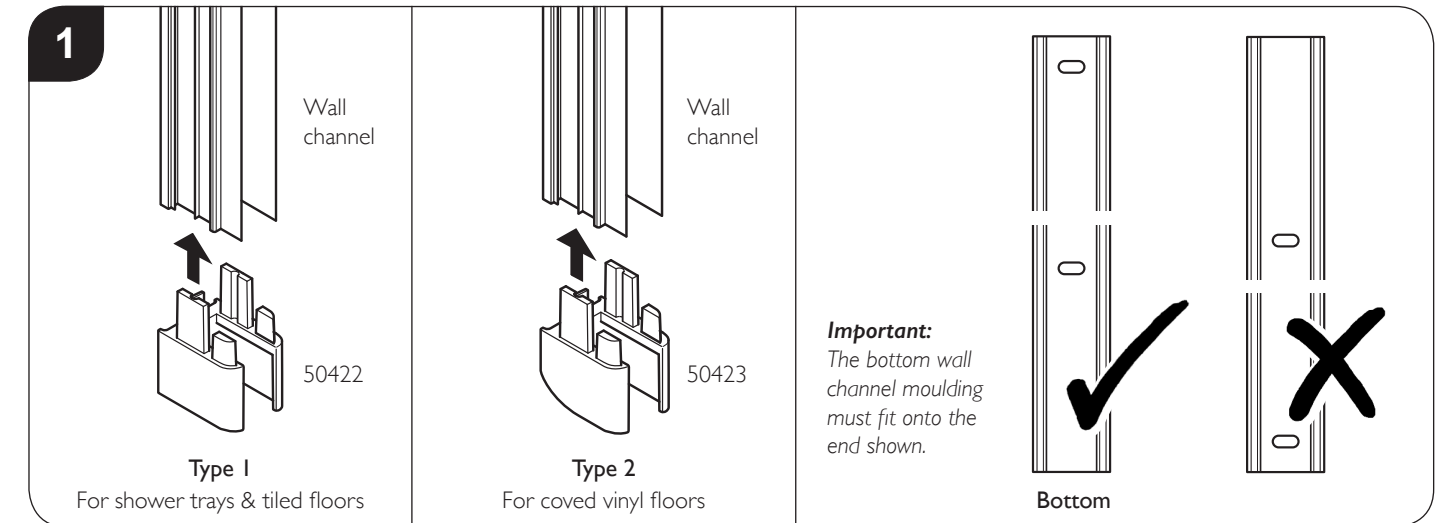


**With the Doors level and centralised between wall channels:** On the inside of the door (on the 'V' groove line marked on the wall channels), drill 2x 3mm holes through the wall channels into the door. The holes should be 70mm down from the top and up from the bottom of the wall channel as shown. Fix using 2x 10mm screws (3222). Remove setting tools from under the doors.

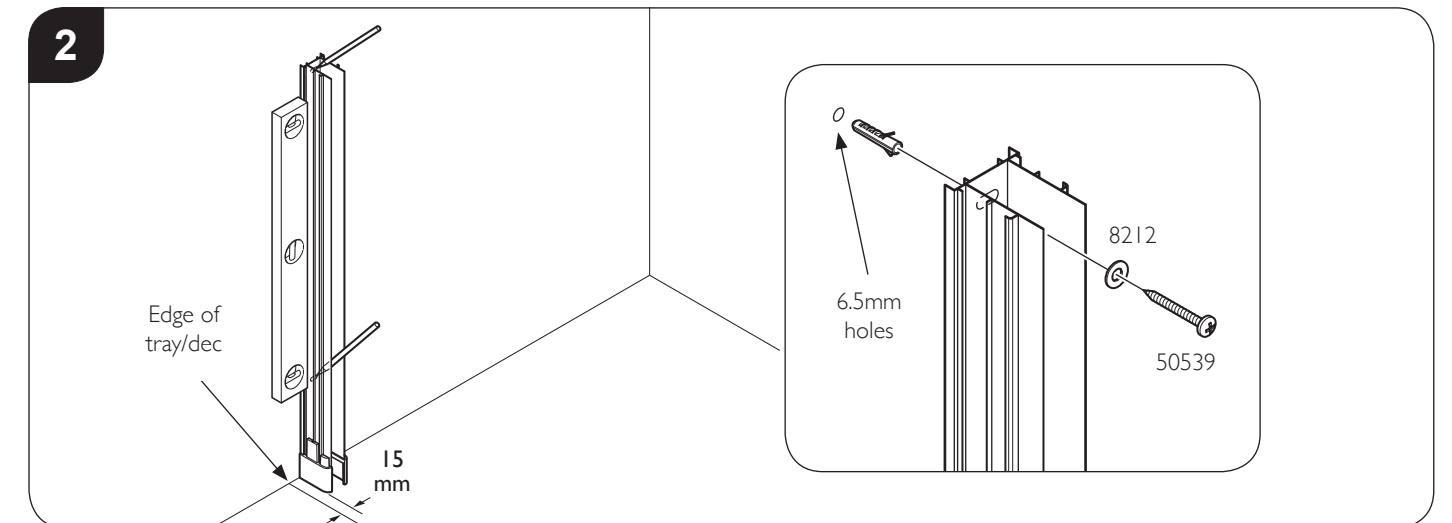


**a:** Side cover strips fully down onto both sides of the wall channels.  
**b:** **Note:** Pushing in the bottom moulding inwards will help the cover strips slide all of the way down. **c:** Fit top caps (80710) to top of wall channels.

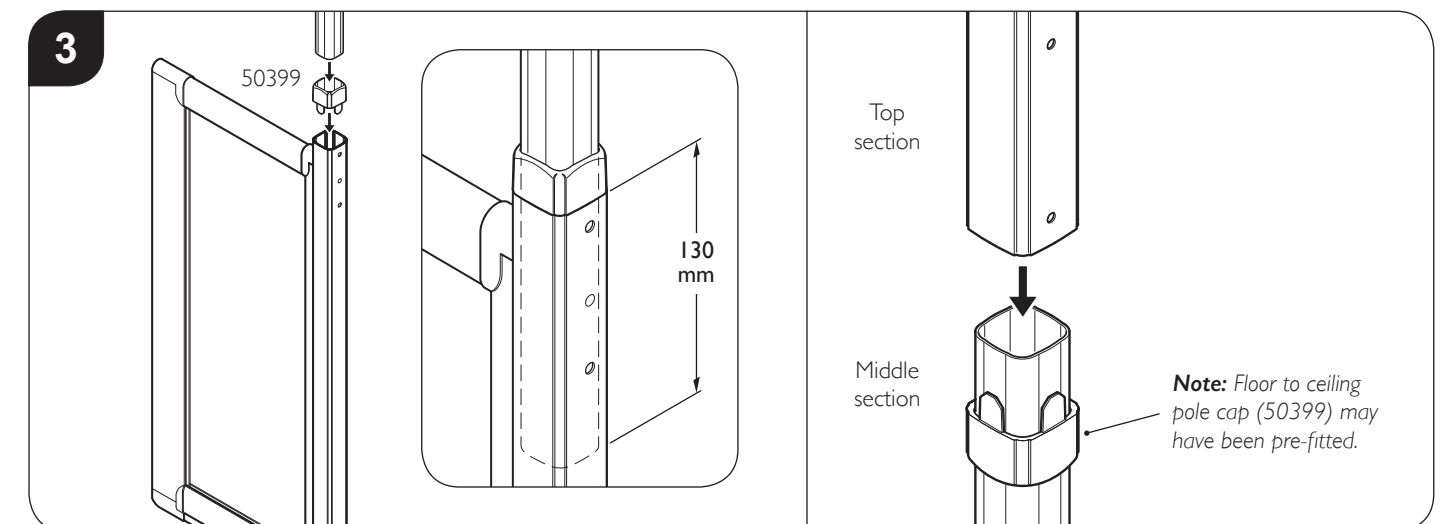
## Section A Fixed Panel and Floor to Ceiling Pole



Choose the appropriate bottom wall channel moulding and push fit onto the bottom of the **short** wall channel. **Take note the hole positions in the wall channels.**

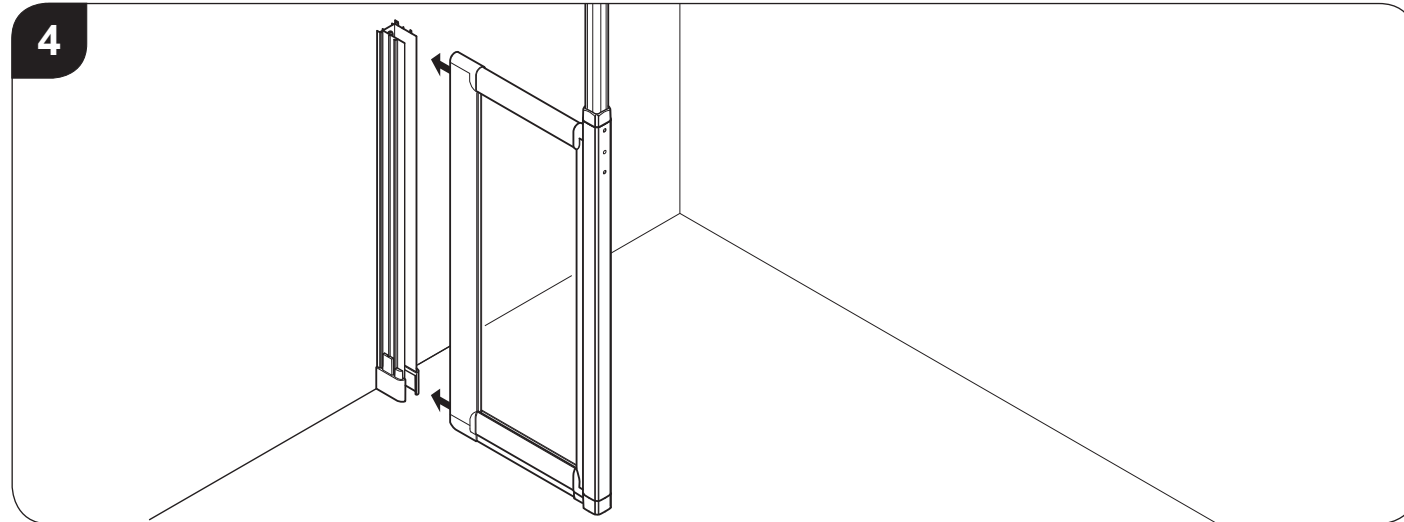


Position the wall channels 15mm in from the edge of the tray/dec as shown. Ensure wall channel is vertical and mark both hole positions onto the wall. Drill wall using a 6.5mm drill bit and insert wall plugs (3230). Fix wall channel to the wall using 2x washers (8212) and 50mm screws (50539). **Do not overtighten screws.**

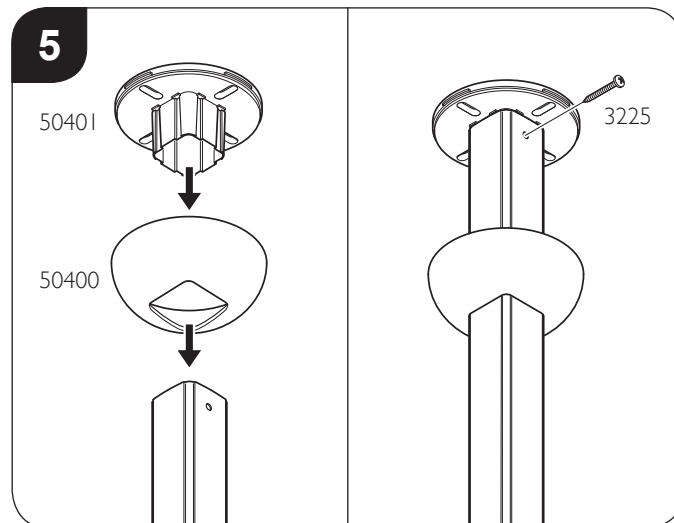


**Fixed panel:** Position moulding (50399) on fixed panel and insert the middle section of floor to ceiling pole into fixed panel down through the moulding to a depth of 130mm. Position moulding (50399) on middle section of floor to ceiling pole. Slide the top section of floor to ceiling pole onto the middle section.

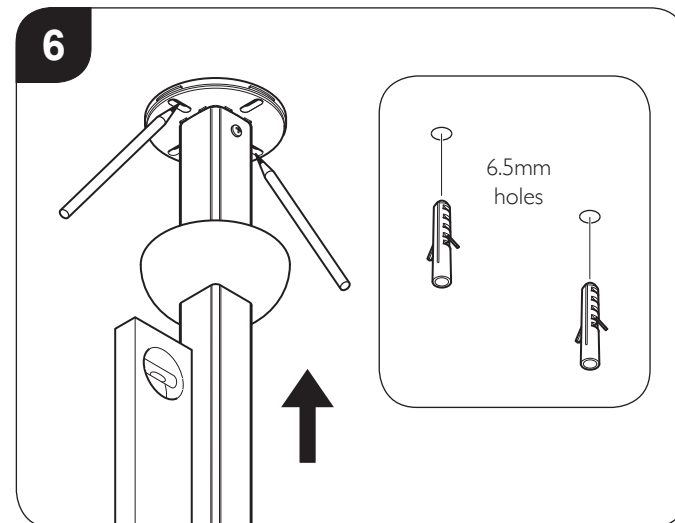
## Section A Fixed Panel and Floor to Ceiling Pole



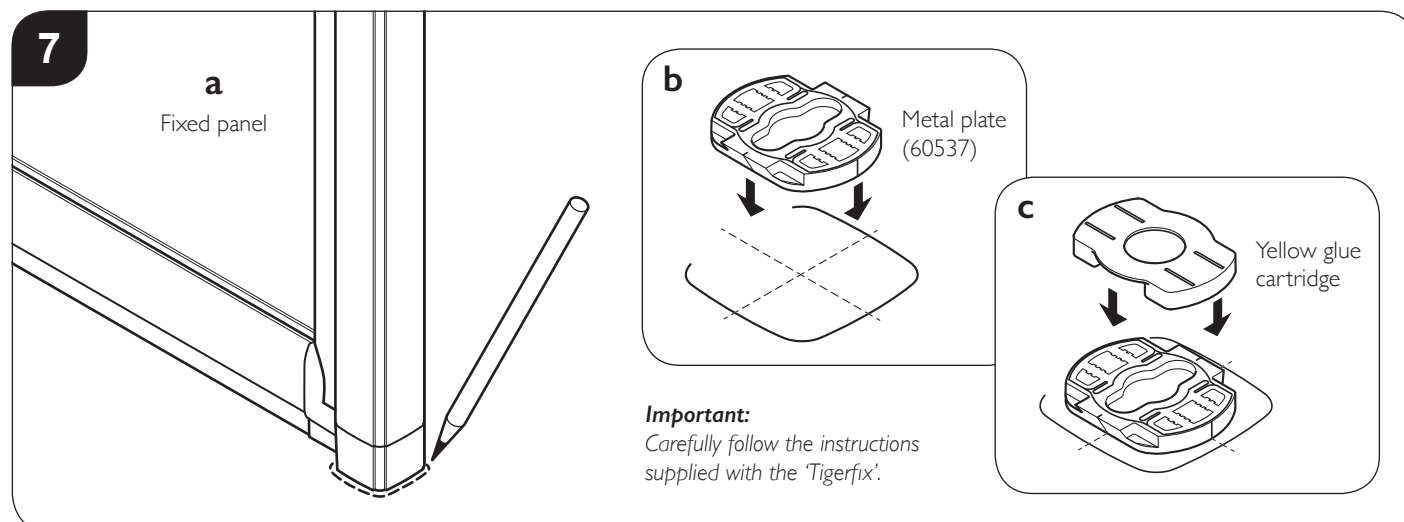
Fully insert the fixed panel into the **short** wall channel.



**Floor to ceiling pole:** Slide cover (50401) over top of pole and push fit base (50400) into end of pole. Fix base to pole using 32mm screw (3225).



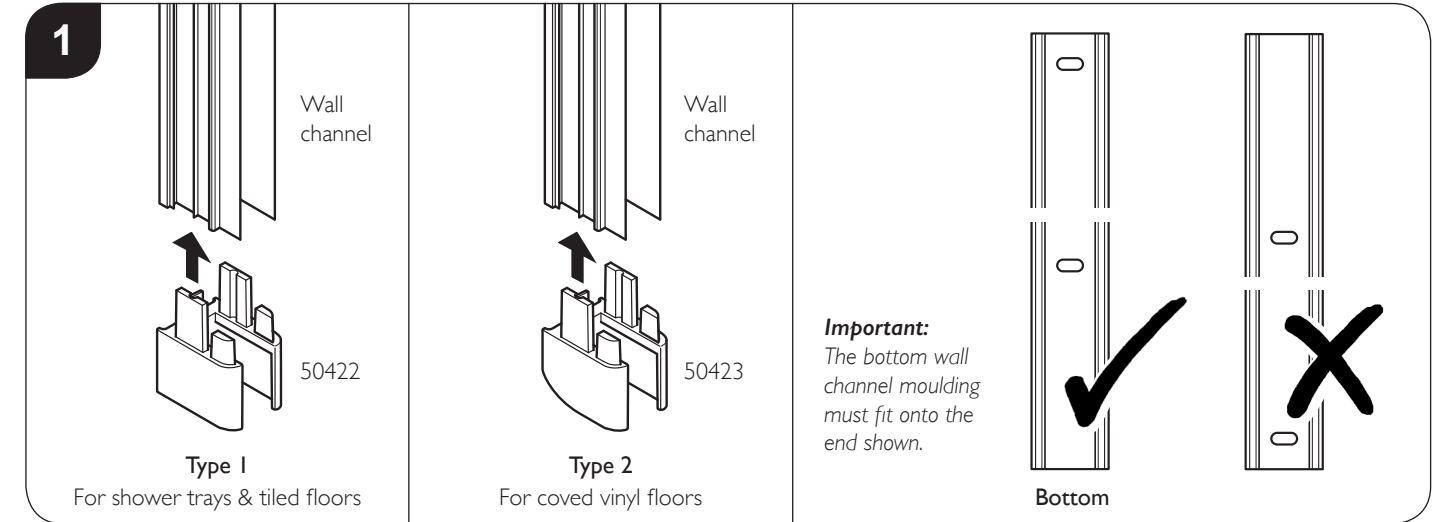
Slide the top section of floor to ceiling pole up to the ceiling. Ensure it is vertical and mark fixing hole positions. Remove the pole and fixed panel, drill ceiling using a 6.5mm drill bit and insert wall plugs (3230).



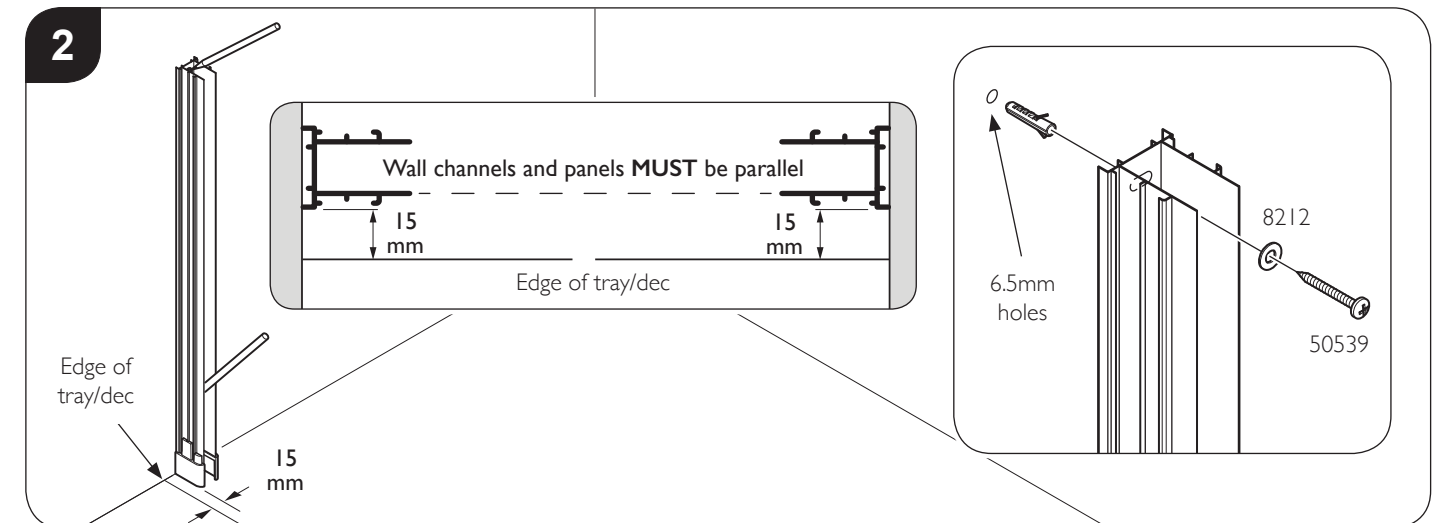
**Fit 'Tigerfix' to the floor:** **a:** With the floor clean and the fixed panel in its final position, draw a line around the fixed panel moulding and remove the panel.

**b:** Peel the backing off the back of the 'Tigerfix' metal plate and position in the centre of the marked area. **c:** Insert the yellow plastic glue cartridge into the metal plate and push down fully.

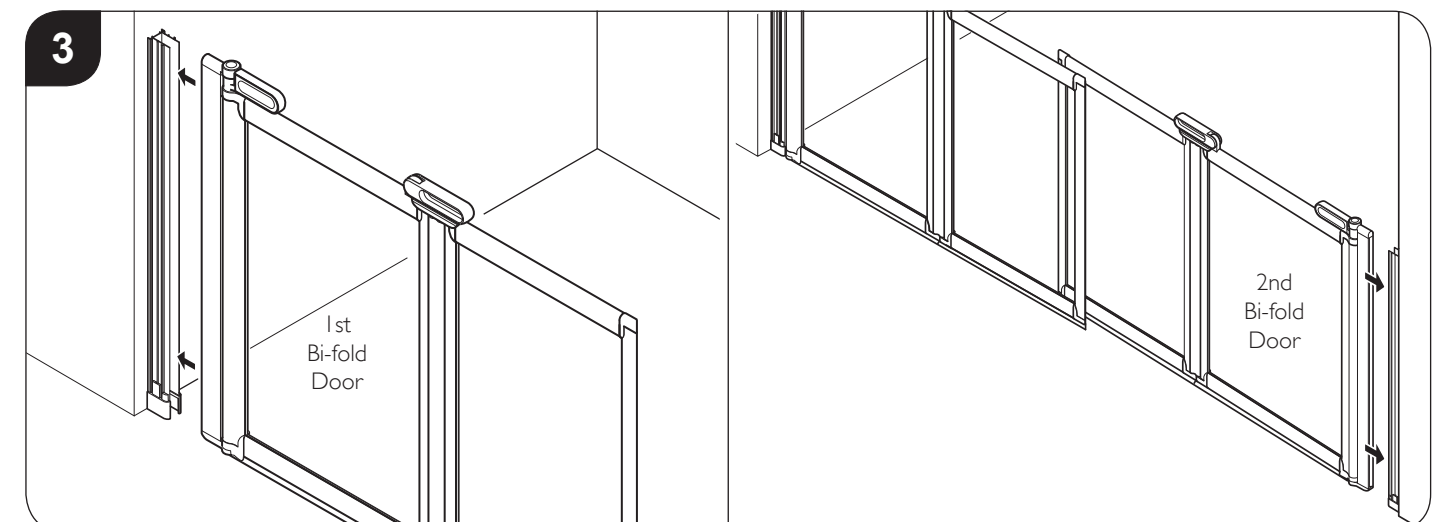
## Section E Double Door Alcove Enclosure - Fitting Wall Channels



Choose the appropriate bottom wall channel mouldings and push fit onto the bottom of the **long** wall channels. Take note the hole positions in the wall channels.

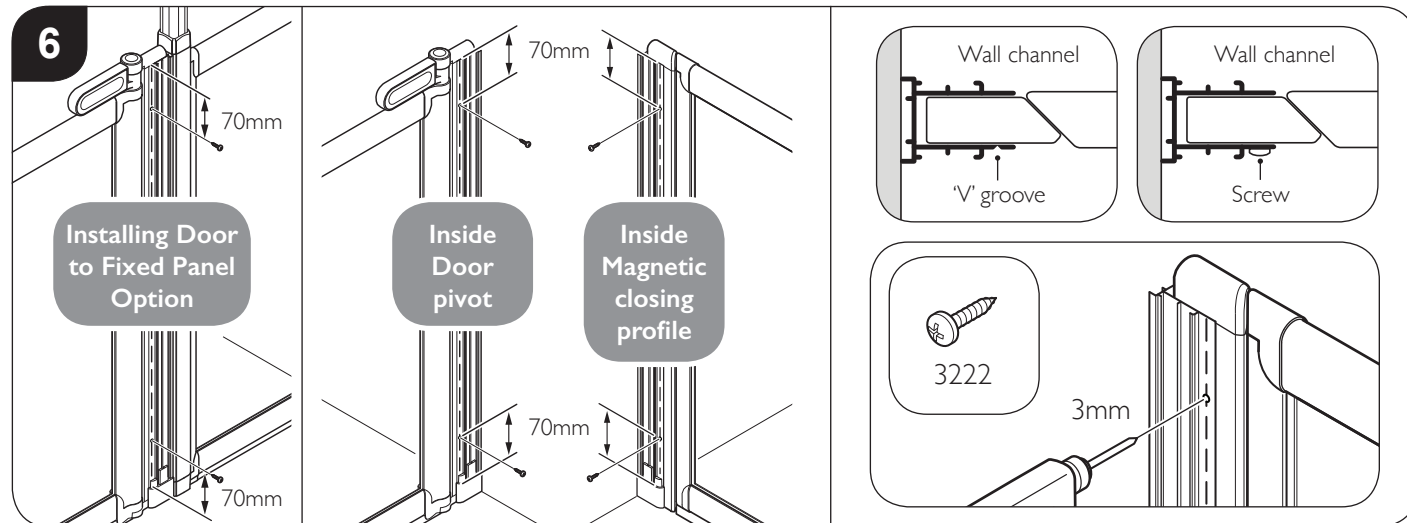


**Position the wall channels as shown in step 2.** Ensure wall channels are vertical (if fixed panels are used, they must be parallel with the door) and mark both hole positions onto the walls. Remove the wall channels and drill wall using a 6.5mm drill bit and insert wall plugs (3230). Fix wall channels to the walls using 2x washers (8212) and 50mm screws (50539). **Do not overtighten screws.**

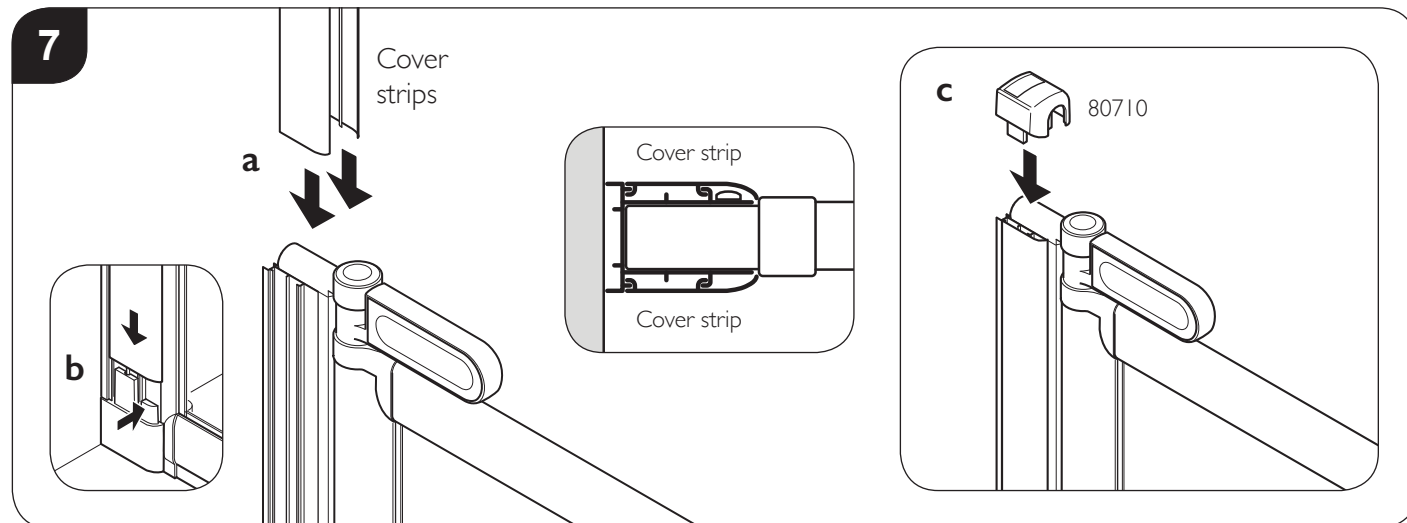


Fully insert the Doors into the wall channels (Bi-fold door shown as example).

## Section D Alcove Enclosure - Fitting Wall Channels

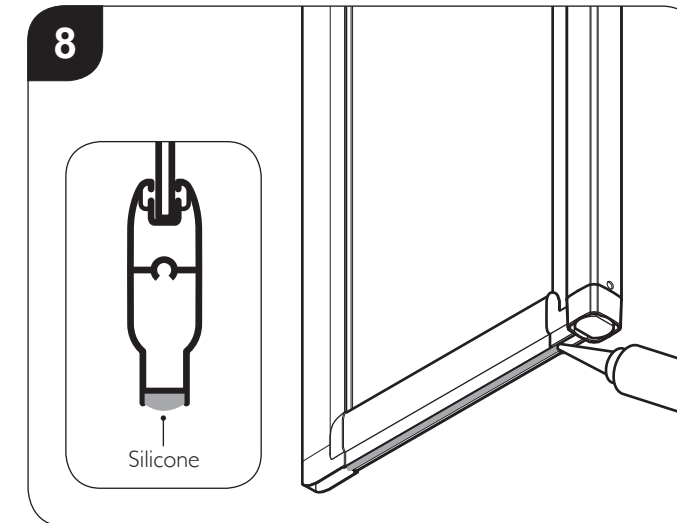


With the Door level and centralised between wall channels: (*Bi-fold door shown as example*) On the inside of the Door and closing profile (on the 'V' groove line marked on the wall channels), drill 2x 3mm holes through the wall channels into the Door and closing profile. The holes should be 70mm down from the top and up from the bottom of the wall channel. Fix using 2x 10mm screws (3222). Remove setting tool from under the door.

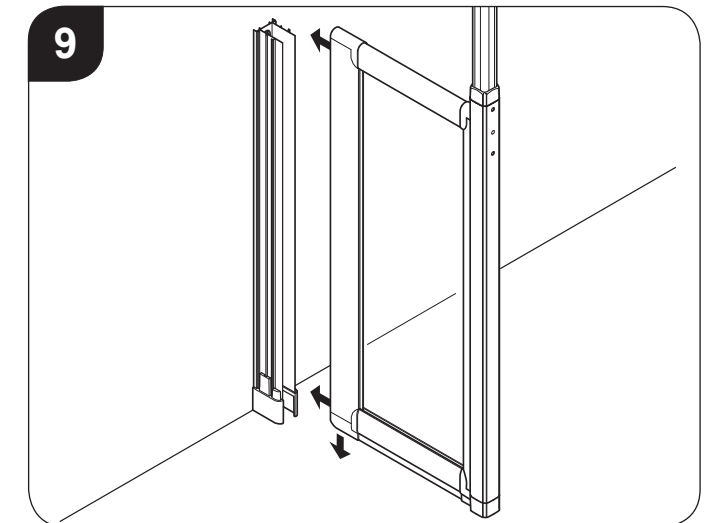


**a:** Side cover strips fully down onto both sides of the wall channels.  
**b: Note:** Pushing in the bottom moulding inwards will help the cover strips slide all of the way down. **c:** Fit top caps (80710) to top of wall channels.

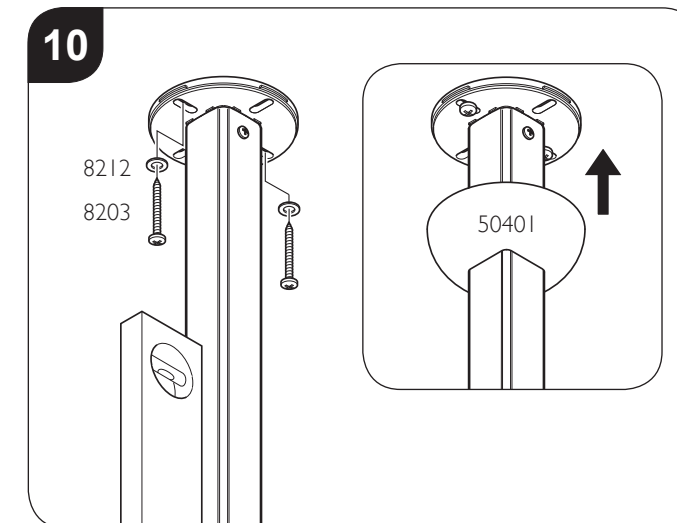
## Section A Fixed Panel and Floor to Ceiling Pole



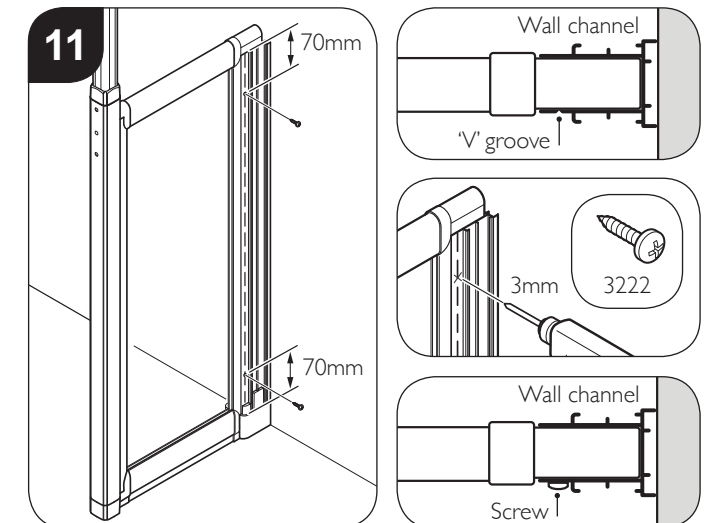
Before re-inserting the fixed panel into the wall channel, apply silicone along the recess in the bottom of the fixed panel.



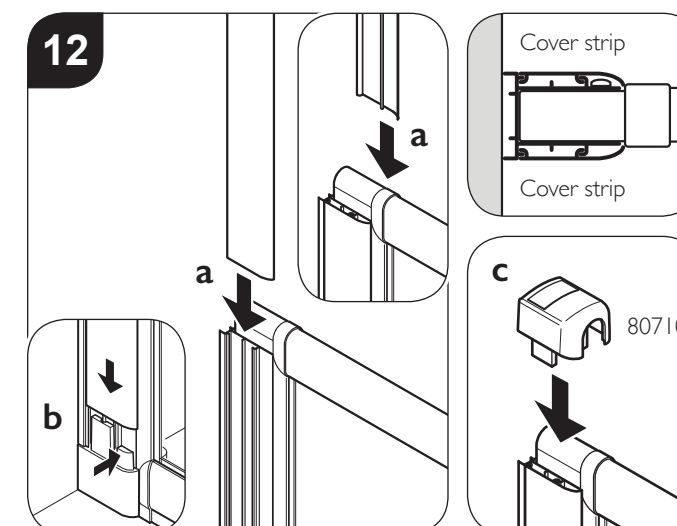
Fully insert fixed panel into wall channel. Ensure the 'Tigerfix' is positioned under the fixed panel moulding and push down on fixed panel to ensure it is fully down. Wipe away any excess silicone from bottom of panel.



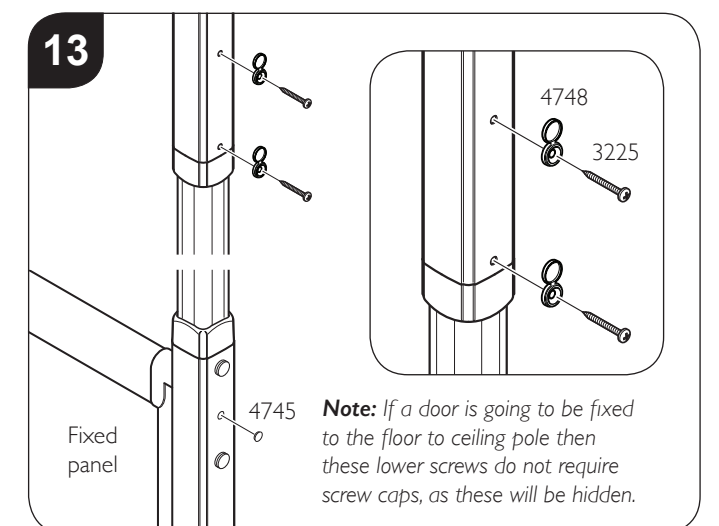
Line up the floor to ceiling pole with drilled holes in ceiling. Ensure pole is vertical. Fix to ceiling using 2x 32mm screws (8203) and 2x washers (8212). Push fit cover (50401).



Inside the fixed panel (in the 'V' groove line), drill 2x 3mm holes through the wall channel into the fixed panel, 70mm down from the top and 70mm up from the bottom. Fix using 2x 10mm screws (3222).



**a:** Side cover strips fully down onto both sides of the wall channel.  
**b: Note:** Pushing in the bottom moulding inwards will help the cover strips slide all of the way down. **c:** Fit top cap (80710) to top of wall channel.

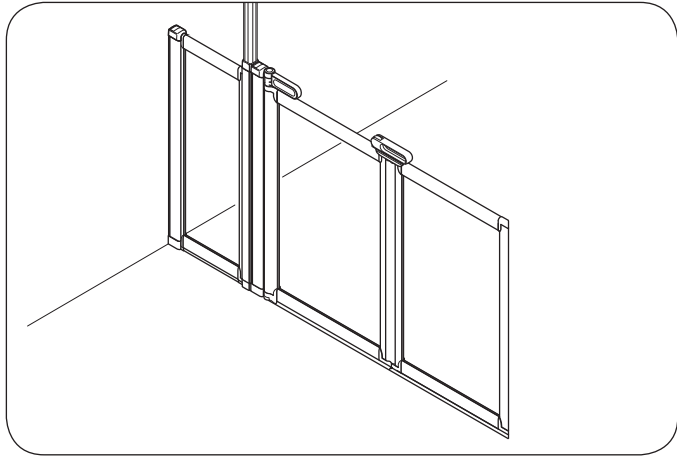


Drill 4x 3mm holes in the Floor to ceiling pole where shown. Fix pole sections together using 4x 32mm screws (3225) and covers caps (4748). Push fit hole plug (4745) into hole shown.

Installing Doors  
Component Content List

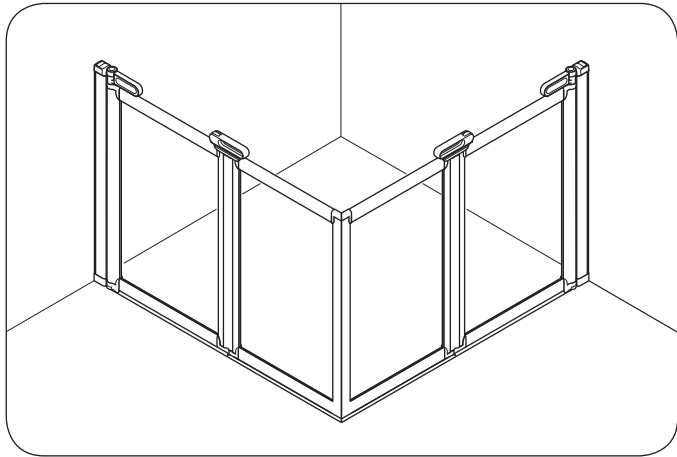
Note: This screwpack is per door, multiple doors will have multiple screwpacks.

Section B - Installing Door to Fixed Panel  
Page: 9



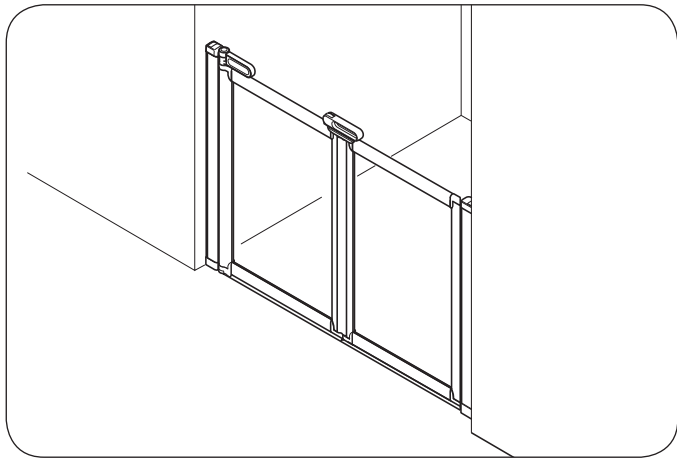
- 3222 x 2
- 3230 x 2
- 8203 x 2  
only required if  
fixed panel used
- 50539 x 2

Section C - Fitting Corner Enclosure  
Pages: 10 - 11

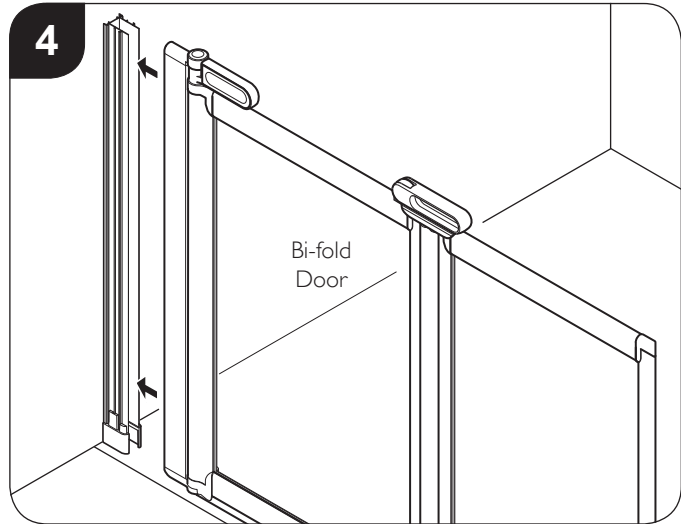


- 8212 x 2
- 50457 x 1
- 80710 x 1
- 50422 x 1
- 50423 x 1
- 60538 x 1

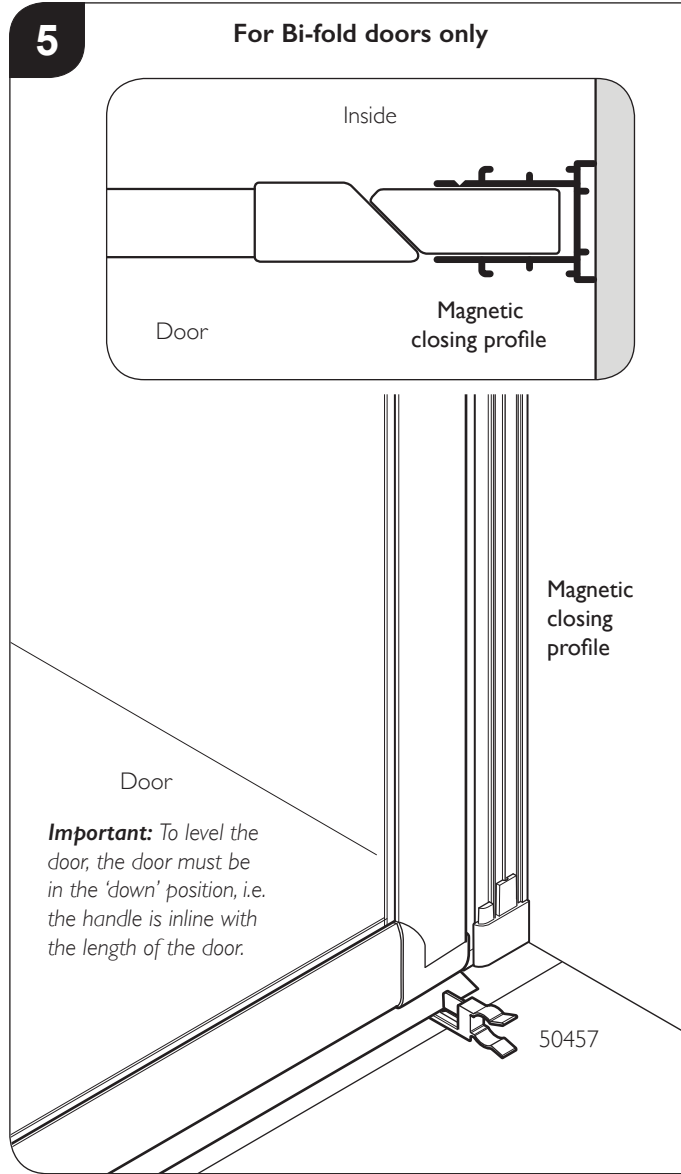
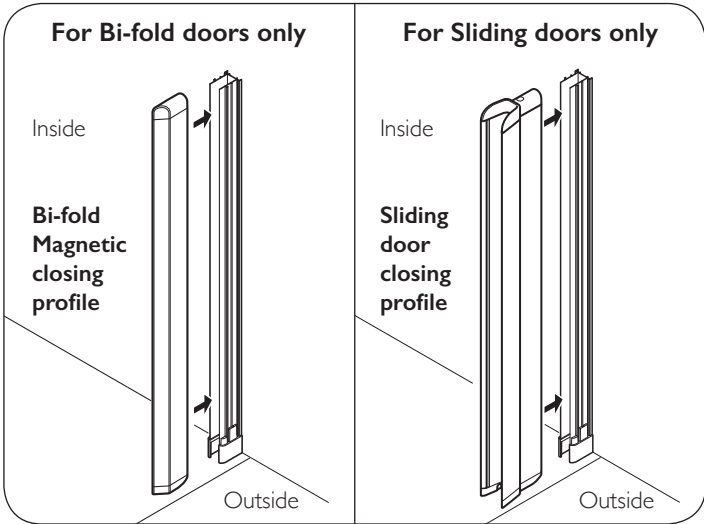
Section D & E - Fitting Alcove Enclosures  
Pages: 12 - 14 & 15 - 16



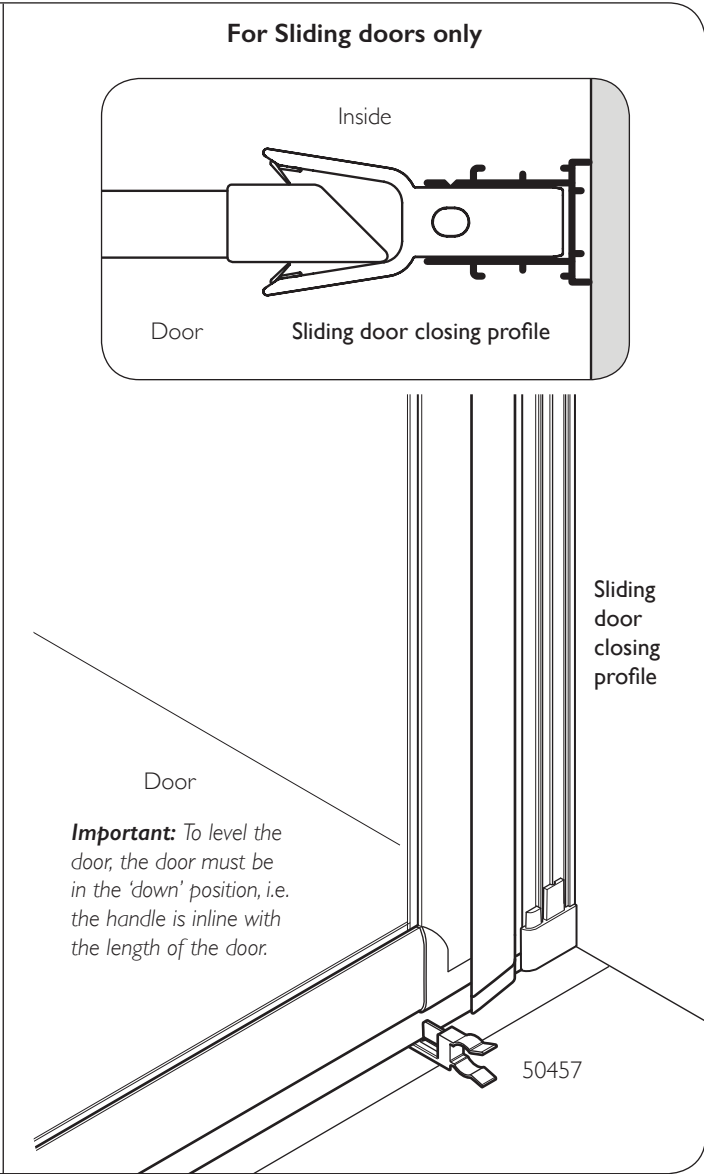
Section D  
Alcove Enclosure - Fitting Doors



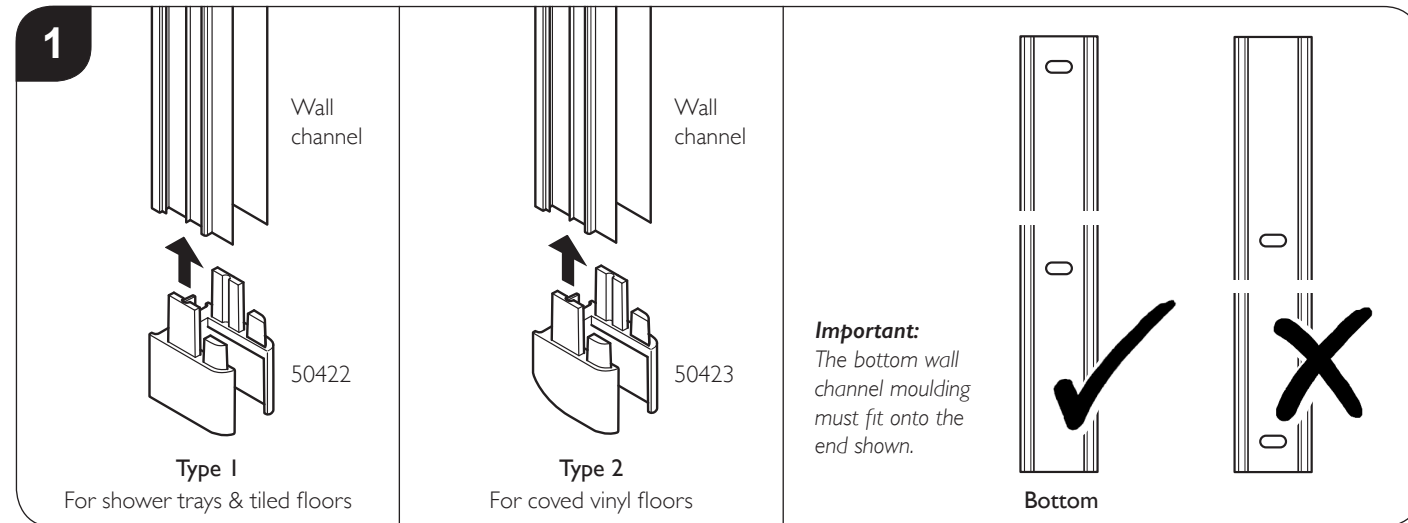
Fully insert the Door into the long wall channel (Bi-fold door shown as example).  
Fully insert either the 'Bi-fold magnetic closing profile' or 'Sliding door closing profile' into the short wall channel.



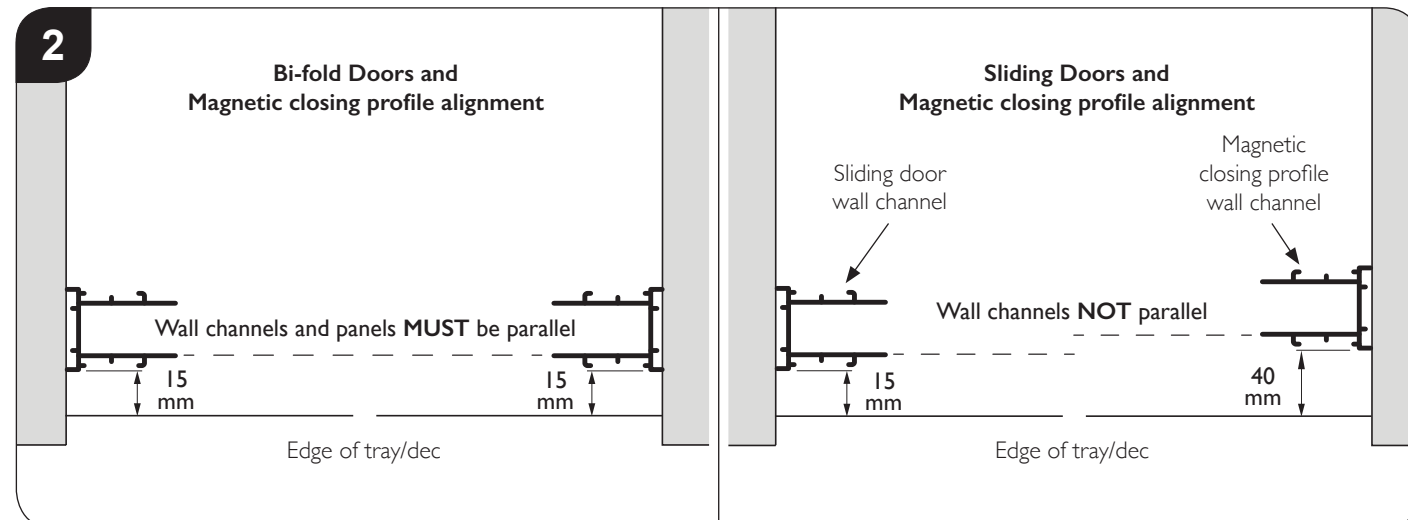
To level the door: Using the setting tool (50457), set the height of the door. Insert the setting tool under the seal at the end of the door.  
Bi-fold door: Ensure the magnets line up down the full length of the door and closing profile. Sliding door: Ensure the door inserts evenly into the closing profile. Allow the door to rest on the door setting tool as shown above, this ensures the door is correctly height adjusted. Ensure the door/ closing profile are centralised in-between the wall channels.



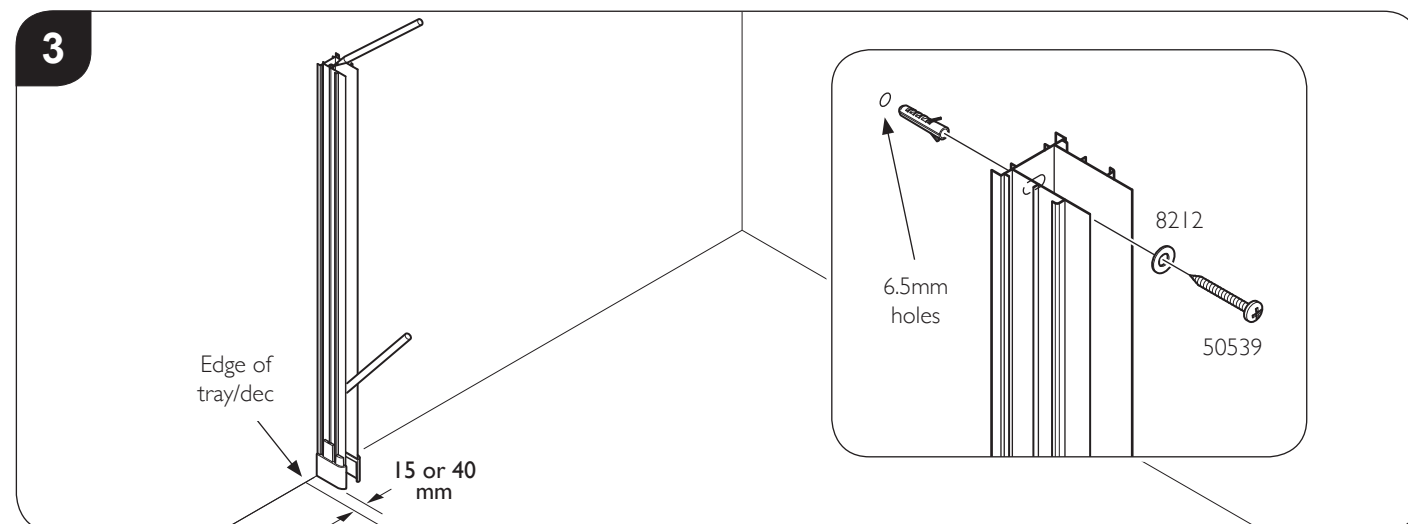
## Section D Alcove Enclosure - Fitting Wall Channels



Choose the appropriate bottom wall channel moulding and push fit onto the bottom of the **long** and **short** wall channel. **Take note the hole positions in the wall channels.**

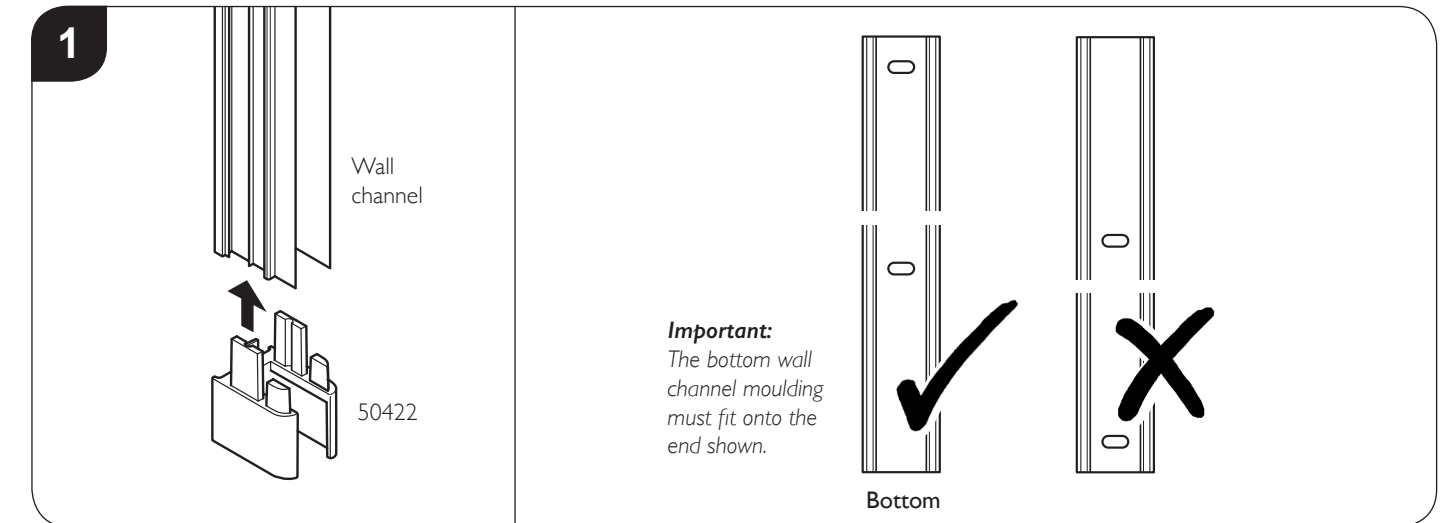


**Positioning the wall channels: Bi-fold Doors:** Both wall channels **MUST** be parallel with each other and set back 15mm from the edge of the tray/dec as shown above. **Sliding Doors:** The Door **long** wall channel should be set back 15mm and the Magnetic closing profile **short** wall channel should be set back 40mm from the edge of the tray/dec as shown above.

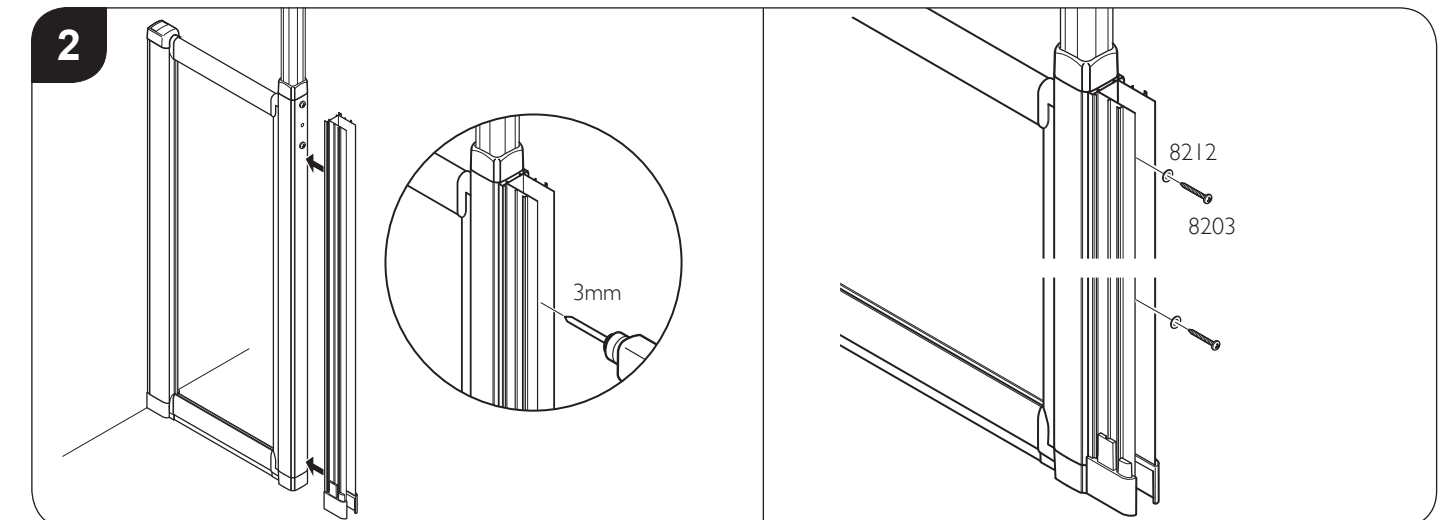


**Position the wall channels as shown in step 2.** Ensure wall channels are vertical (if fixed panels are used, they must be parallel with the door) and mark both hole positions onto the walls. Remove the wall channels and drill wall using a 6.5mm drill bit and insert wall plugs (3230). Fix wall channels to the walls using 2x washers (8212) and 50mm screws (50539). **Do not overtighten screws.**

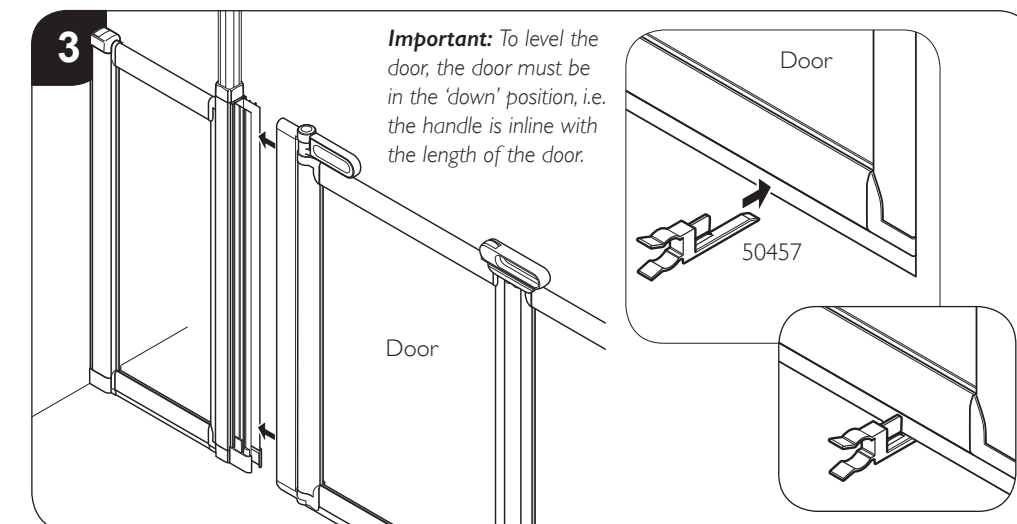
## Section B Installing Door to Fixed Panel



Push fit bottom wall channel moulding onto the bottom of the **long** wall channel. **Take note the hole positions in the wall channels.**



Position the **long** wall channel against the fixed panel and drill 2 x 3mm holes through the wall channel and into the fixed panel. Fix wall channel to fixed panel using 2x 32mm screws (8203) and washers (8212). **Do not overtighten screws.**



Fully insert the door into the **long** wall channel.

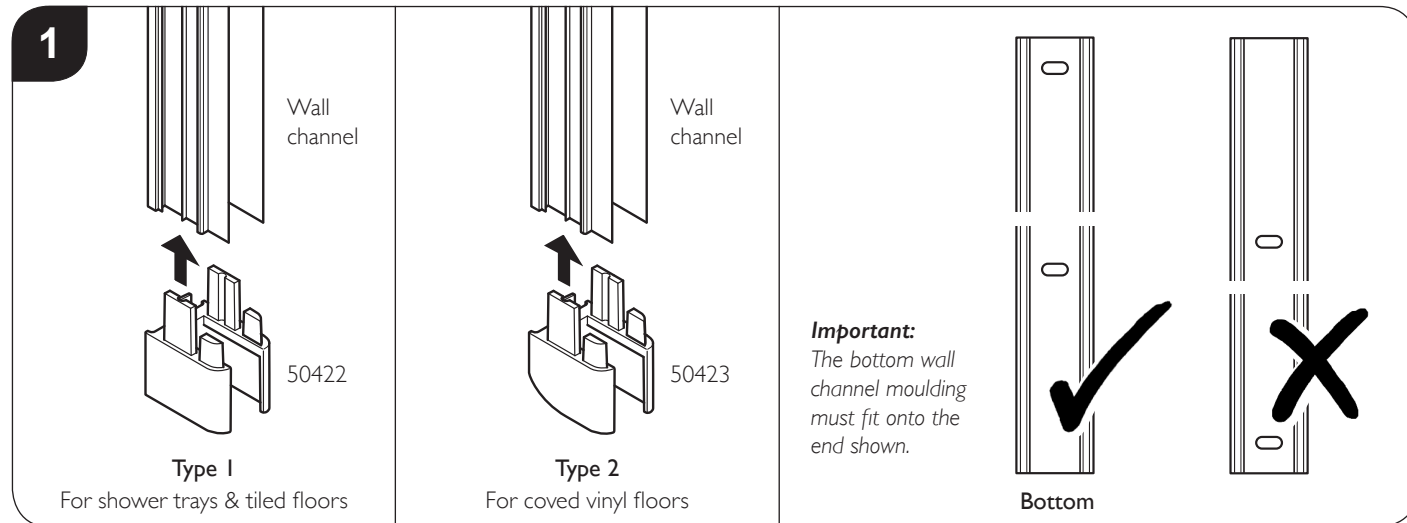
**To level the door:** At the closing end of the door, insert the setting tool (50457) under the door. Allow the door to rest on the door setting tool as shown above, this ensures the door is correctly height adjusted.

If installing a **Corner Enclosure** now proceed to page 10 and follow steps 1 - 6 to finish.

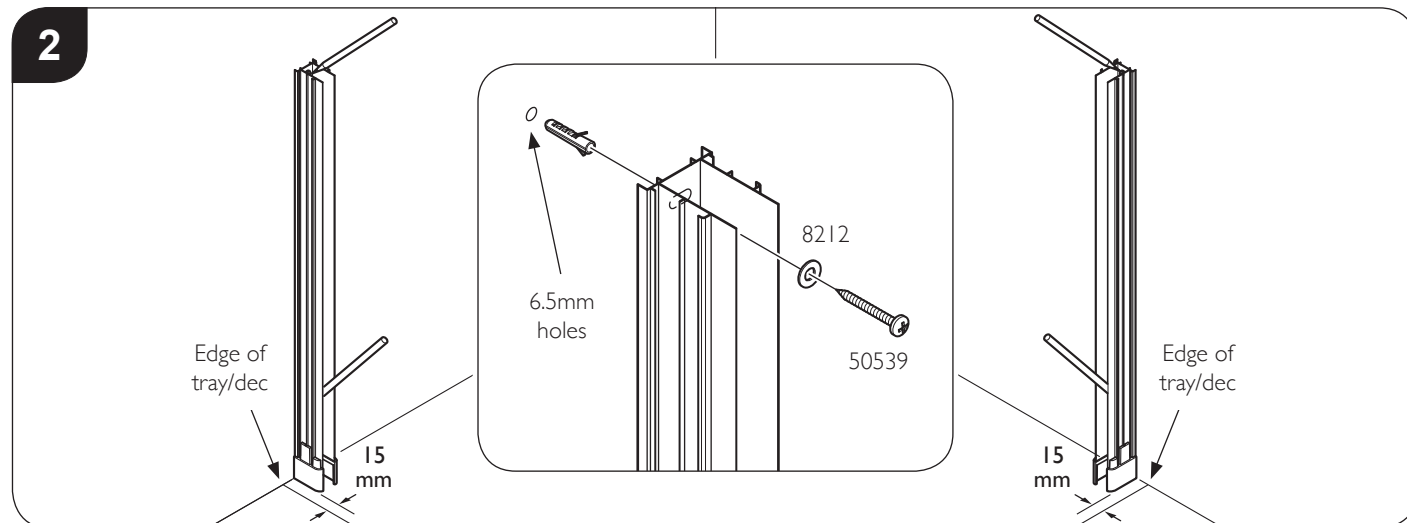
If installing an **Alcove Enclosure** now proceed to page 12 and follow steps 1 - 7 to finish.



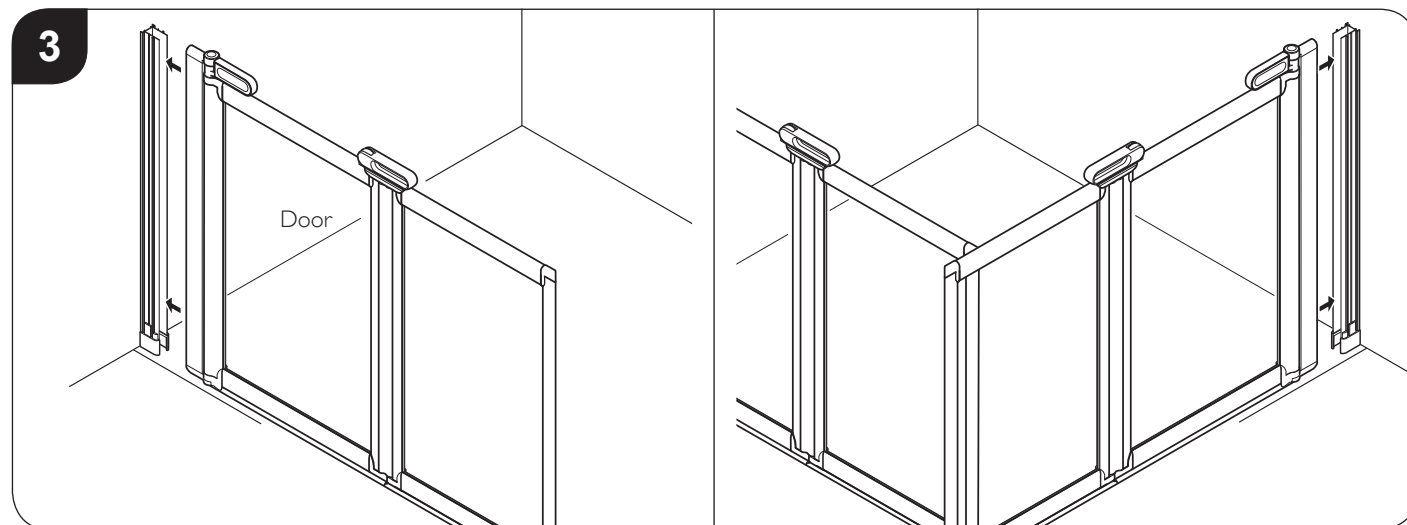
## Section C Corner Enclosure - Fitting Wall Channels



Choose the appropriate bottom wall channel moulding and push fit onto the bottom of the **long** wall channel. **Take note the hole positions in the wall channels.**

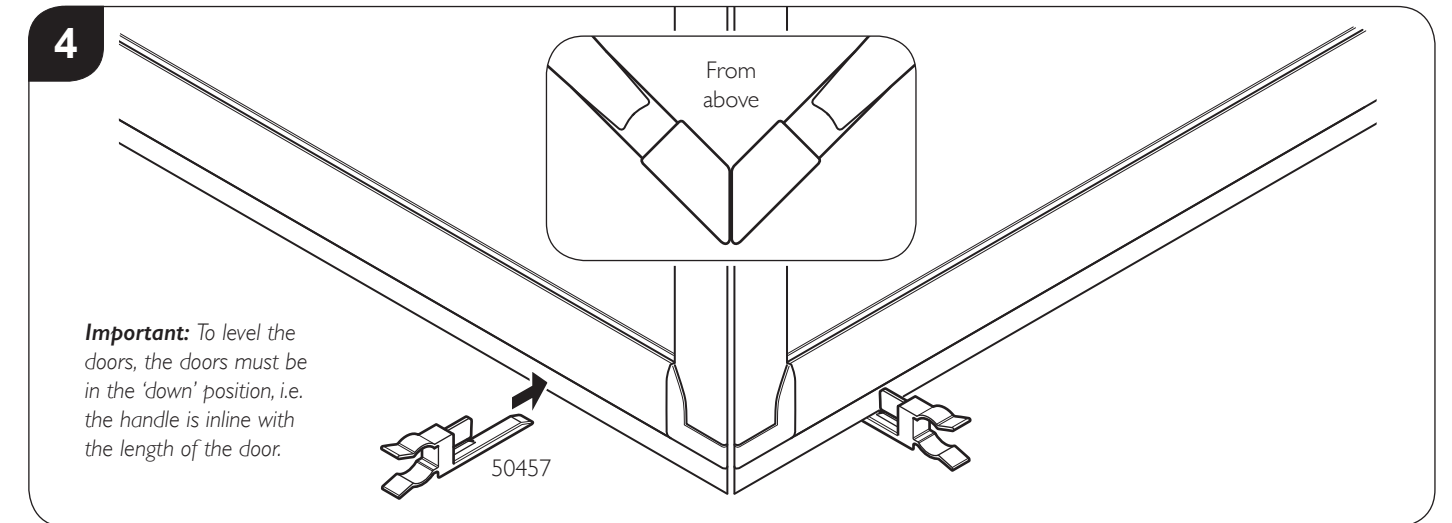


Position the **long** wall channels 15mm in from the edge of the tray/dec as shown. Ensure wall channels are vertical and mark both hole positions onto the walls. Remove the wall channels and drill wall using a 6.5mm drill bit and insert wall plugs (3230). Fix wall channels to the walls using 2x washers (8212) and 50mm screws (50539). **Do not overtighten screws.**

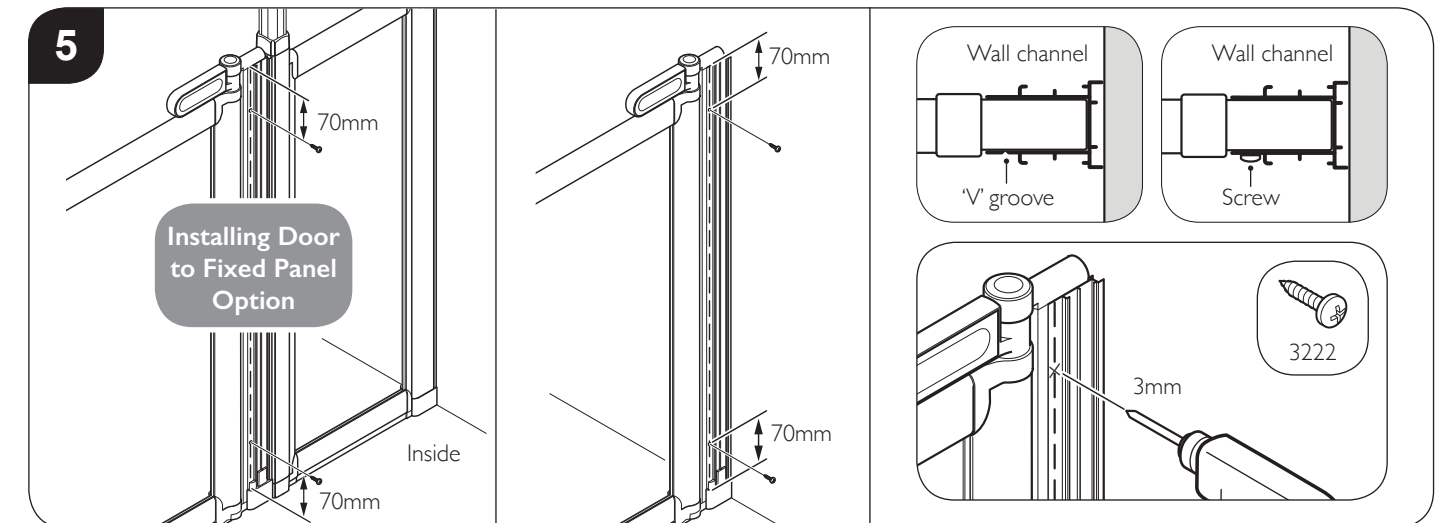


Fully insert both doors into the wall channels (Bi-fold doors shown as example).

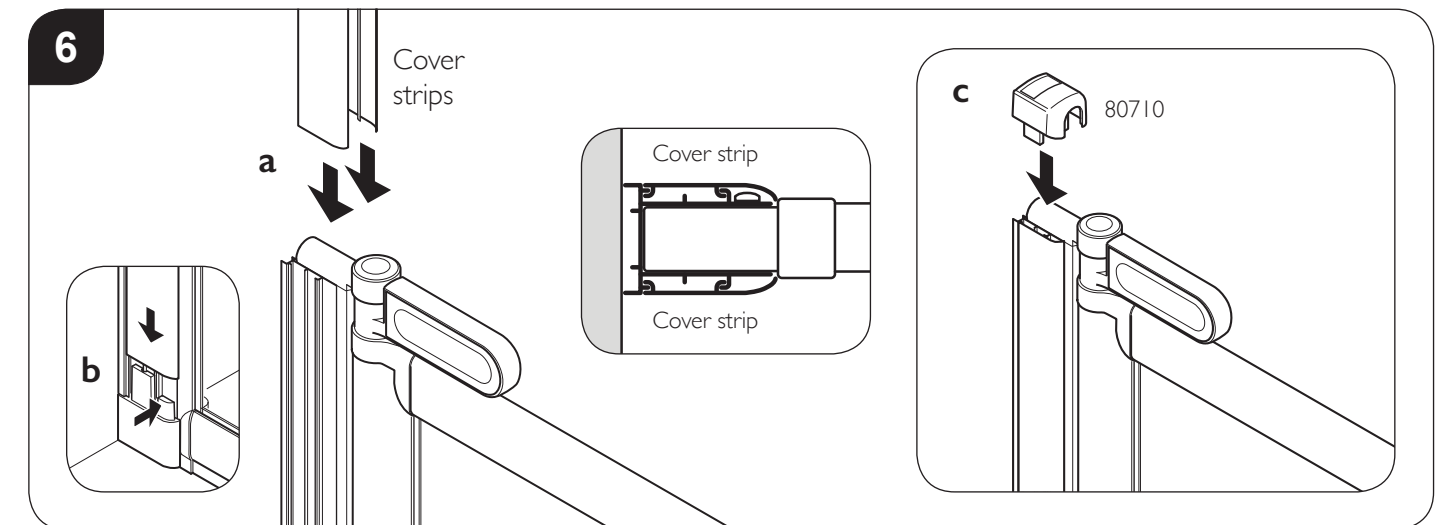
## Section C Corner Enclosure - Fitting Doors



**To level the doors:** Using the setting tool (50457), set the height of the doors ensuring the magnets line up down the full length of the doors. Insert the setting tools under the seals at the end of the doors. Allow the doors to rest on the door setting tools as shown above, this ensures the doors are correctly height adjusted.



**With the Doors level and centralised between wall channels:** On the inside of the door (on the 'V' groove line marked on the wall channel), drill 2x 3mm holes through the wall channel into the door; 70mm down from the top and up from the bottom of the wall channel as shown. Fix using 2x 10mm screws (3222). Repeat with other door. Remove setting tool from under the doors.



**a:** Side cover strips fully down onto both sides of the wall channel.

**b: Note:** Pushing in the bottom moulding inwards will help the cover strips slide all of the way down. **c:** Fit top cap (80710) to top of wall channel.